

Recombinant Human MRC2 Protein, Myc/DDK-tagged, C13 and N15-labeled

Cat. No. MRC2-4226H **Lot. No.** (See product label)

SPECIFICATION

Product Overview	MRC2 MS Standard C13 and N15-labeled recombinant protein (NP_006030) with a C-terminal MYC/DDK tag, was expressed in HEK293 cells.
Species	Human
Source	HEK293
Description	This gene encodes a member of the mannose receptor family of proteins that contain a fibronectin type II domain and multiple C-type lectin-like domains. The encoded protein plays a role in extracellular matrix remodeling by mediating the internalization and lysosomal degradation of collagen ligands. Expression of this gene may play a role in the tumorigenesis and metastasis of several malignancies including breast cancer, gliomas and metastatic bone disease.
Molecular Mass	166.5 kDa
AA Sequence	MGPGRPAPAPWPRHLLRCVLLLGCLHLGRPGAPGDAALPEPNVFLIFSHGLQGCLC AQQGQVRVTPACNTSLPAQRWKWVSRNRLFNLTGMQCLGTGWPGTNTTASLGMY ECDREALNLRWHCRTLGDQLSLLLGARTSNISKPGTLERGDQTRSGQWRIYGSEED LCALPYHEVYTIQGNSHGKPCPTIPFKYDNQWFHGTSTGREDGHLWCATTQDYGK DERWGFCEPIKSNDCETFWDKDQLTDSCYQFNFQSTLSWREAWASCEQQGADLLSI TEIHEQTYINGLLTGYSSTLWIGLNDLDTSGGWQWSDNSPLKYLNWESDQPDNPSE ENCGVIRTESSGGWQNRDCSIALPYVCKKKPNATAEPTPPDRWANVKVECEPSWQ

 Tel: 1-631-559-9269 1-516-512-3133

 Email: info@creative-biomart.com  Fax: 1-631-938-8127

 45-1 Ramsey Road, Shirley, NY 11967, USA

PFQGH CYRLQAEKRSWQESKKACL RGGGDLVSIHSM AELEFITKQIKQEVEELWIGL
 NDLKLQMNFEWSDGSLVSFTHWHPFEPNNFRDSLEDCVTIWGPEGRWNDSPCNQ
 SLPSICKKAGQLSQGAAEEDHGCRKGWTWHSPSCYWLGEDQVTYSEARRLCTDH
 GSQLVTTINRFEQAFVSSLIYNWEGEYFWTALQDLNSTGSFFWLSGDEV MYTHWNR
 DQPGYSRGGCVALATGSAMGLWEVKNCTSF RARYICRQSLGTPVTPELPGDPPTP
 SLTGSCPQGWASDTKLRYCYKVFSSERLQDKKSWVQAQGACQELGAQLLSLASYE
 EEHFVANMLNKIFGESEPEIHEQHWFWIGLNRRDPRGGQSWRWS DGVGFSYHNFD
 RSRHDDDIRGCAVLDLASLQWVAMQC DTQLDWICKIPRGTDVREPDDSPQGRRE
 WLRFQEA EYKFFEHHSTWAQAQRIC TWFQAELTSVHSQAELDFLSHNLQKFSRAQ
 EQHWWIGLHTSESDGRFRWTDGSIINFISWAPGKPRPVGKDKKCVYMTASREDWG
 DQRCLTALPYICKRSNVTKETQPPDLPTTALGGCPSDWIQFLNKCFQVQGQEPQSR
 VKWSEAQFSCEQQAQLVTITNPLEQAFITASLPNVTFDLWIGLHASQRDFQWVEQ
 EPLMYANWAPGEPSPGSPAPSGNKPTSCAVVLHSPSAHFTGRWDDRSCTEETHGF
 ICQKGTDPSPALPPAPGTELSYLN GTFRLLQKPLRWH DALLLCESHNASLAY
 VDPYQTQAFLTQAARGLRTPLWIGLAGEEGSRRYSWVSEEP LNYVGWQDGEPQQP
 GGCTYVDVDGAWRTTSCDTKLQGA VCGVSSGPPPPRRISYHGSCPQGLADSAWIP
 FREHCYSFHMELL LGHKEARQRCQRAGGAVLSILDEMENVFVWEHLQSYEGQSRG
 AWLGMNFNPKGGTLVWQDNTAVNYSNWGPPGLGPSMLSHNSCYWIQSNSGLWR
 PGACTNITMGVVCKLPRAEQSSFSPSALPENPAALVVVLM AVL LLLALLTAALILYRR
 RQSIERGAFEGARYSRSSSSPTEATEKNILVSDMEMNEQQETRTRPLEQKLISEEDL
 AANDILDYKDDDDKV

Purity > 80% as determined by SDS-PAGE and Coomassie blue staining

Stability Stable for 3 months from receipt of products under proper storage and handling conditions.

Storage Store at -80 centigrade. Avoid repeated freeze-thaw cycles.

Concentration 50 µg/mL as determined by BCA

 Tel: 1-631-559-9269 1-516-512-3133

 Email: info@creative-biomart.com  Fax: 1-631-938-8127

 45-1 Ramsey Road, Shirley, NY 11967, USA

Storage Buffer 100 mM glycine, 25 mM Tris-HCl, pH 7.3.

GENE INFORMATION

Gene Name MRC2 mannose receptor C type 2 [Homo sapiens (human)]

Official Symbol MRC2

Synonyms MRC2; mannose receptor, C type 2; C-type mannose receptor 2; CD280; CLEC13E; ENDO180; KIAA0709; endocytic receptor 180; UPAR-associated protein; macrophage mannose receptor 2; C-type lectin domain family 13 member E; endocytic receptor (macrophage mannose receptor family); urokinase-type plasminogen activator receptor-associated protein; UPARAP; FLJ35911;

Gene ID 9902

mRNA Refseq NM_006039

Protein Refseq NP_006030

MIM 612264

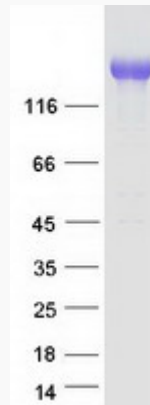
UniProt ID Q9UBG0

 Tel: 1-631-559-9269 1-516-512-3133

 Email: info@creative-biomart.com  Fax: 1-631-938-8127

 45-1 Ramsey Road, Shirley, NY 11967, USA

SDS-PAGE



 Tel: 1-631-559-9269 1-516-512-3133

 Email: info@creative-biomart.com  Fax: 1-631-938-8127

 45-1 Ramsey Road, Shirley, NY 11967, USA