

Recombinant Full Length Human MRC2 Protein, C-Flag-tagged

Cat. No. MRC2-515HFL Lot. No. (See product label)

SPECIFICATION

Product Overview	Recombinant Full Length Human MRC2 Protein, fused to Flag-tag at C-terminus, was expressed in Mammalian cells.
Species	Human
Source	Mammalian Cells
Description	This gene encodes a member of the mannose receptor family of proteins that contain a fibronectin type II domain and multiple C-type lectin-like domains. The encoded protein plays a role in extracellular matrix remodeling by mediating the internalization and lysosomal degradation of collagen ligands. Expression of this gene may play a role in the tumorigenesis and metastasis of several malignancies including breast cancer, gliomas and metastatic bone disease.
Form	25 mM Tris HCl, pH 7.3, 100 mM glycine, 10% glycerol.
Molecular Mass	166.5 kDa
AA Sequence	MGPGRPAPAPWPRHLLRCVLLLGCLHLGRPGAPGDAALPEPNVFLIFSHGLQGCL AQQGQVRVTPACNT SLPAQRWKWVSRNRLFNLGTMQCLGTGWPGTNTTASLGM YECDREALNLRWHCRTLGDQLSLLL GARTSN ISKPGTLERGDQTRSGQWRIYGSE EDLCALPYHEVYTIQGNSHGKPCPTIPFKYDNQWFHGCTSTGREDGH LWCATTQDY GKDERWGFCEPIKSNDCETFWDKQDLTDSCYQFNFQSTLSWREAWASCEQQGADL LSITEIH EQTYINGLLTGYSSTLWIGLNDLDTSGGWQWSDNSPLKYLNWESDQPDN PSEENCGVIRTESSGGWQNRD CSIALPYVCKKKPNATAEPTPPDRWANVKVECEP

 Tel: 1-631-559-9269 1-516-512-3133

 Email: info@creative-biomart.com  Fax: 1-631-938-8127

 45-1 Ramsey Road, Shirley, NY 11967, USA

SWQPFQGHYRLQAEKRSWQESKKACLRGGGDLVSI HSMAELEFITKQIKQEVEEL
 WIGLNDLKLQMNFEWSDGSLVSFTHWHPFEPNNFRDSLEDCVTIWGPEGR WNDS
 PCNQSLPSICKKAGQLSQGAAEEDHGCRKGWTWHSPSCYWLGEDQVTYSEARRL
 CTDHGSQVLVIT NRFEQAFVSSLIYNWEGEYFWTALQDLNSTGSSFFWLSGDEVMYT
 HWNRDQPGYSRGGCVALATGSAMGLW EVKNCTSFRRARYICRQSLGTPVTPELPG
 PDPTPLTGTSCPGWASDTKLRYCYKVFSSERLQDKKSWVQA QGACQELGAQLL
 SLASYEEHFVANMLNKIFGESEPEIHEQHWFWIGLNRRDPRGGQSWRWSDGVGF
 SYH NFDRSRHDDDDIRGCAVLDLQWVAMQCDTQLDWICKIPRGTDVREPDDS
 PQGRREWLRFQEAAYKFF EHHSTWAQAQRCTWFQAELTSVHSQAELDFLSHNLQ
 KFSRAQEQHWWIGLHTSESDGRFRWTDGSIINF ISWAPGKPRVVGKDKKCVYMTA
 SREDWGDQRCLTALPYICKRSNVTKETQPPDLPTTALGGCPSDWIQFL NKCFQVQ
 GQEPQSRVKWSEAQFSCQEAQLVTITNPLEQAFITASLPNVTFDLWIGLHASQRD
 FQWVEQ EPLMYANWAPGEPSPGSPAPSGNKPTSCAVVLHSPSAHFTGRWDDRS
 CTEETHGFICQKGTDPSPSPA ALPPAPGTELSYLNQTFRLLQKPLRWHDALLLCE
 SHNASLAYVPDYPYTAFLTQAARGLRTPWIGLAGE EGSRRYSWVSEEPNLYVGW
 QDGEPPQPGGCTYVDVDGAWRTTSCDTKLQGAVCGVSSGPPPPRRISYHGS CPQ
 GLADSAWIPFREHCYSFHMELLGHKEARQRCQRAGGAVLSILDEMENVFVWEHLQ
 SYEGQSRGAWL GMNFNPKGGTLVWQDNTAVNYSNWGPPGLGPSMLSHNSCYWI
 QSNSGLWRPGACTNITMGVVCKLPRAEQ SSFSPSALPENPAALVVVLMVLLLLLAL
 LTAALILYRRRQSIERGAFEGARYSRSSSSPTEATEKNILVS
 DMEEMNEQQETRTRPLEQKLISEEDLAANDILDYKDDDDKV

Purity > 80% as determined by SDS-PAGE and Coomassie blue staining.

Stability Stable for 12 months from the date of receipt of the product under proper storage and handling conditions. Avoid repeated freeze-thaw cycles.

Storage Store at -80 centigrade.

Concentration >50 ug/mL as determined by microplate BCA method.

 Tel: 1-631-559-9269 1-516-512-3133

 Email: info@creative-biomart.com  Fax: 1-631-938-8127

 45-1 Ramsey Road, Shirley, NY 11967, USA

Preparation	Recombinant protein was captured through anti-DDK affinity column followed by conventional chromatography steps.
Protein Families	Druggable Genome, Transmembrane
Full Length	Full L.

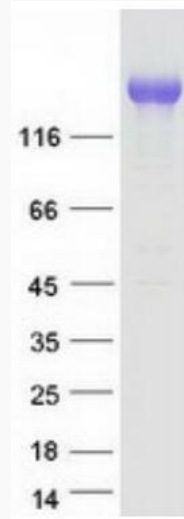
GENE INFORMATION

Gene Name	MRC2 mannose receptor C type 2 [Homo sapiens (human)]
Official Symbol	MRC2
Synonyms	CD280; UPARAP; CLEC13E; ENDO180
Gene ID	9902
mRNA Refseq	NM_006039.5
Protein Refseq	NP_006030.2
MIM	612264
UniProt ID	Q9UBG0

 Tel: 1-631-559-9269 1-516-512-3133

 Email: info@creative-biomart.com  Fax: 1-631-938-8127

 45-1 Ramsey Road, Shirley, NY 11967, USA



Coomassie blue staining of purified MRC2 protein.

 Tel: 1-631-559-9269 1-516-512-3133

 Email: info@creative-biomart.com  Fax: 1-631-938-8127

 45-1 Ramsey Road, Shirley, NY 11967, USA