

Recombinant Human MRC2 Protein (Met1-Ala1414), C-His tagged

Cat. No. MRC2-5377H Lot. No. (See product label)

SPECIFICATION

Product Overview	Recombinant human MRC2 (Met1-Ala1414) fused with the C-terminal His tag was expressed in Mammalian cells.
Species	Human
Source	Mammalian Cells
ProteinLength	Met1-Ala1414
Form	Lyophilized powder/frozen liquid
Molecular Mass	155.65 kDa
Endotoxin	< 1.0 EU/μg of the protein as determined by the LAL method.
Purity	>90% as determined by SDS-PAGE.
Notes	For research use only.
Storage	Use a manual defrost freezer and avoid repeated freeze thaw cycles. Store at 2 to 8 centigrade for one week. Store at -20 to -80 centigrade for twelve months from the date of receipt.
Storage Buffer	Supplied as solution form in PBS or lyophilized from PBS.

 Tel: 1-631-559-9269 1-516-512-3133

 Email: info@creative-biomart.com  Fax: 1-631-938-8127

 45-1 Ramsey Road, Shirley, NY 11967, USA

Reconstitution Reconstitute in sterile water for a stock solution.

Shipping They are shipped out with dry ice/blue ice unless customers require otherwise.

GENE INFORMATION

Gene Name [MRC2 mannose receptor, C type 2 \[Homo sapiens \(human\) \]](#)

Official Symbol [MRC2](#)

Synonyms MRC2; mannose receptor, C type 2; C-type mannose receptor 2; CD280; CLEC13E; ENDO180; KIAA0709; endocytic receptor 180; UPAR-associated protein; macrophage mannose receptor 2; C-type lectin domain family 13 member E; endocytic receptor (macrophage mannose receptor family); urokinase-type plasminogen activator receptor-associated protein; UPARAP; FLJ35911;

Gene ID [9902](#)

mRNA Refseq [NM_006039](#)

Protein Refseq [NP_006030](#)

MIM [612264](#)

UniProt ID [Q9UBG0](#)

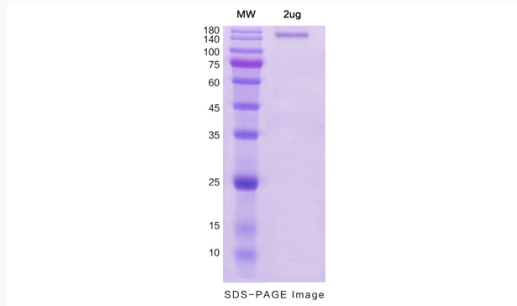
 Tel: 1-631-559-9269 1-516-512-3133

 Email: info@creative-biomart.com  Fax: 1-631-938-8127

 45-1 Ramsey Road, Shirley, NY 11967, USA



SDS-PAGE



Tel: 1-631-559-9269 1-516-512-3133

Email: info@creative-biomart.com Fax: 1-631-938-8127

45-1 Ramsey Road, Shirley, NY 11967, USA