

## Recombinant Human MRC2 Protein, GST-tagged

**Cat. No.** MRC2-5535H    **Lot. No.** (See product label)

### SPECIFICATION

<b>Product Overview</b>	Human MRC2 partial ORF ( NP_006030, 105 a.a. - 214 a.a.) recombinant protein with GST-tag at N-terminal.
<b>Species</b>	Human
<b>Source</b>	Wheat Germ
<b>Description</b>	MRC2 is a recycling endocytic receptor that functions in cell motility and remodeling of the extracellular matrix by promoting cell migration and uptake of collagens for intracellular degradation (Wienke et al., 2007 [PubMed 17974964]).[supplied by OMIM
<b>Molecular Mass</b>	37.84 kDa
<b>AA Sequence</b>	ASLGMYECDREALNLRWHCRTLGDQLSLLL GARTSNISKPGTLERGDQTRSGQWRI YGSEEDLCALPYHEVYTIQGN SHGKPCTIPFKYDNQWFHGCTSTGREDGHLWCA
<b>Applications</b>	Enzyme-linked Immunoabsorbent Assay Western Blot (Recombinant protein) Antibody Production Protein Array
<b>Notes</b>	Best use within three months from the date of receipt of this protein.
<b>Storage</b>	Store at -80 centigrade. Aliquot to avoid repeated freezing and thawing.

 Tel: 1-631-559-9269    1-516-512-3133

 Email: [info@creative-biomart.com](mailto:info@creative-biomart.com)     Fax: 1-631-938-8127

 45-1 Ramsey Road, Shirley, NY 11967, USA

**Storage Buffer** 50 mM Tris-HCl, 10 mM reduced Glutathione, pH=8.0 in the elution buffer.

## GENE INFORMATION

**Gene Name** MRC2 mannose receptor, C type 2 [ Homo sapiens ]

**Official Symbol** MRC2

**Synonyms** MRC2; mannose receptor, C type 2; C-type mannose receptor 2; CD280; CLEC13E; ENDO180; KIAA0709; endocytic receptor 180; UPAR-associated protein; macrophage mannose receptor 2; C-type lectin domain family 13 member E; endocytic receptor (macrophage mannose receptor family); urokinase-type plasminogen activator receptor-associated protein; UPARAP; FLJ35911;

**Gene ID** 9902

**mRNA Refseq** NM\_006039

**Protein Refseq** NP\_006030

**MIM** 612264

**UniProt ID** Q9UBG0

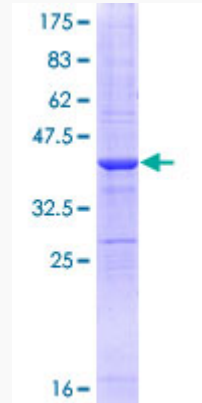
 Tel: 1-631-559-9269 1-516-512-3133

 Email: [info@creative-biomart.com](mailto:info@creative-biomart.com)  Fax: 1-631-938-8127

 45-1 Ramsey Road, Shirley, NY 11967, USA

**Quality Control**

**Testing:**



12.5% SDS-PAGE Stained with Coomassie Blue.

 Tel: 1-631-559-9269 1-516-512-3133

 Email: [info@creative-biomart.com](mailto:info@creative-biomart.com)  Fax: 1-631-938-8127

 45-1 Ramsey Road, Shirley, NY 11967, USA