

## Recombinant Human MRPL1 Protein, GST-tagged

Cat. No. MRPL1-5553H Lot. No. (See product label)

### SPECIFICATION

<b>Product Overview</b>	Human MRPL1 full-length ORF ( AAH15109, 1 a.a. - 303 a.a.) recombinant protein with GST-tag at N-terminal.
<b>Species</b>	Human
<b>Source</b>	Wheat Germ
<b>Description</b>	Mammalian mitochondrial ribosomal proteins are encoded by nuclear genes and help in protein synthesis within the mitochondrion. Mitochondrial ribosomes (mitoribosomes) consist of a small 28S subunit and a large 39S subunit. They have an estimated 75% protein to rRNA composition compared to prokaryotic ribosomes, where this ratio is reversed. Another difference between mammalian mitoribosomes and prokaryotic ribosomes is that the latter contain a 5S rRNA. Among different species, the proteins comprising the mitoribosome differ greatly in sequence, and sometimes in biochemical properties, which prevents easy recognition by sequence homology. This gene encodes a 39S subunit protein that belongs to the L1 ribosomal protein family. [provided by RefSeq]
<b>Molecular Mass</b>	59.07 kDa
<b>AA Sequence</b>	MVYQTSLCSCSVNIRVPNRHFAAAKKSAAKTKKGAKEKTPDEKKDEIEKIKAYPYME GEPEDDVYLKRLYPRQIYEVEKAVHLLKKFQILDFTSPKQSVYLDLTLDMALGKKKNV EPFTSVLSLPYPFASEINKVAVFTENASEVKIAEENGAASAGGTSLIQKIWDDEIVADF YVAVPEIMPELNRLRKKLNKKYPKLSRNSIGRDIPKMLELFKNGHEIKVDEERENFLQ

 Tel: 1-631-559-9269 1-516-512-3133

 Email: [info@creative-biomart.com](mailto:info@creative-biomart.com)  Fax: 1-631-938-8127

 45-1 Ramsey Road, Shirley, NY 11967, USA

TKIATLDMSSDQIAANLQAVINEVCRHRPLNLGPFVVRAFLRSSTSEGLLLKIDPLLK  
EVKNEESEKEDA

**Applications**  
 Enzyme-linked Immunoabsorbent Assay  
 Western Blot (Recombinant protein)  
 Antibody Production  
 Protein Array

**Notes** Best use within three months from the date of receipt of this protein.

**Storage** Store at -80 centigrade. Aliquot to avoid repeated freezing and thawing.

**Storage Buffer** 50 mM Tris-HCl, 10 mM reduced Glutathione, pH=8.0 in the elution buffer.

## GENE INFORMATION

**Gene Name** MRPL1 mitochondrial ribosomal protein L1 [ Homo sapiens ]

**Official Symbol** MRPL1

**Synonyms** MRPL1; mitochondrial ribosomal protein L1; 39S ribosomal protein L1, mitochondrial; BM022; L1MT; MRP-L1; FLJ96680;

**Gene ID** 65008

**mRNA Refseq** NM\_020236

**Protein Refseq** NP\_064621

**MIM** 611821

 Tel: 1-631-559-9269 1-516-512-3133

 Email: [info@creative-biomart.com](mailto:info@creative-biomart.com)  Fax: 1-631-938-8127

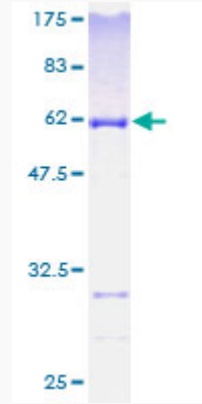
 45-1 Ramsey Road, Shirley, NY 11967, USA

UniProt ID


Q9BYD6

Quality Control

Testing:



12.5% SDS-PAGE Stained with Coomassie Blue.

 Tel: 1-631-559-9269 1-516-512-3133

 Email: [info@creative-biomart.com](mailto:info@creative-biomart.com)  Fax: 1-631-938-8127

 45-1 Ramsey Road, Shirley, NY 11967, USA