

Recombinant Human MRPL11 Protein, Myc/DDK-tagged, C13 and N15-labeled

Cat. No. MRPL11-5000H **Lot. No.** (See product label)

SPECIFICATION

Product Overview	MRPL11 MS Standard C13 and N15-labeled recombinant protein (NP_733934) with a C-terminal MYC/DDK tag, was expressed in HEK293 cells.
Species	Human
Source	HEK293
Description	This nuclear gene encodes a 39S subunit component of the mitochondrial ribosome. Alternative splicing results in multiple transcript variants. Pseudogenes for this gene are found on chromosomes 5 and 12.
Molecular Mass	18 kDa
AA Sequence	MSKLGRAARGLRKPERGVSIQFCKEFNERTKDIKEGIPLPTKILVKPDRTFEIKIGQP TVSYFLKAAAGIEK GARQTGKEVAGLVTLKHVYEIARIKAQDEAFALQDVPLSSVVRS IIGSARSLGIRVVKDLSSEELAAFQKERAIFLAAQKEADLAAQEAAKTRTRP L EQKL ISEEDLAANDILDYKDDDDKV
Purity	> 80% as determined by SDS-PAGE and Coomassie blue staining
Stability	Stable for 3 months from receipt of products under proper storage and handling conditions.
Storage	Store at -80 centigrade. Avoid repeated freeze-thaw cycles.

 Tel: 1-631-559-9269 1-516-512-3133

 Email: info@creative-biomart.com  Fax: 1-631-938-8127

 45-1 Ramsey Road, Shirley, NY 11967, USA

Concentration 50 µg/mL as determined by BCA

Storage Buffer 100 mM glycine, 25 mM Tris-HCl, pH 7.3.

GENE INFORMATION

Gene Name MRPL11 mitochondrial ribosomal protein L11 [Homo sapiens (human)]

Official Symbol MRPL11

Synonyms MRPL11; mitochondrial ribosomal protein L11; 39S ribosomal protein L11, mitochondrial; L11MT; CGI-113; MRP-L11; MGC111024;

Gene ID 65003

mRNA Refseq NM_170738

Protein Refseq NP_733934

MIM 611826

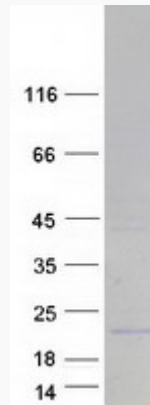
UniProt ID Q9Y3B7

 Tel: 1-631-559-9269 1-516-512-3133

 Email: info@creative-biomart.com  Fax: 1-631-938-8127

 45-1 Ramsey Road, Shirley, NY 11967, USA

SDS-PAGE



 Tel: 1-631-559-9269 1-516-512-3133

 Email: info@creative-biomart.com  Fax: 1-631-938-8127

 45-1 Ramsey Road, Shirley, NY 11967, USA