

## Recombinant Human MRPL11 Protein, GST-tagged

**Cat. No.** MRPL11-5555H    **Lot. No.** (See product label)

### SPECIFICATION

<b>Product Overview</b>	Human MRPL11 full-length ORF ( NP_057134.1, 1 a.a. - 192 a.a.) recombinant protein with GST-tag at N-terminal.
<b>Species</b>	Human
<b>Source</b>	Wheat Germ
<b>Description</b>	Mammalian mitochondrial ribosomal proteins are encoded by nuclear genes and help in protein synthesis within the mitochondrion. Mitochondrial ribosomes (mitoribosomes) consist of a small 28S subunit and a large 39S subunit. They have an estimated 75% protein to rRNA composition compared to prokaryotic ribosomes, where this ratio is reversed. Another difference between mammalian mitoribosomes and prokaryotic ribosomes is that the latter contain a 5S rRNA. Among different species, the proteins comprising the mitoribosome differ greatly in sequence, and sometimes in biochemical properties, which prevents easy recognition by sequence homology. This gene encodes a 39S subunit protein. Sequence analysis identified three transcript variants that encode different isoforms. Pseudogenes corresponding to this gene are found on chromosomes 5q and 12q. [provided by RefSeq]
<b>Molecular Mass</b>	47.1 kDa
<b>AA Sequence</b>	MSKLGRAARGLRKPEVGGVIRAIVRAGLAMPGPPLGPVLGQRGV SINQFCKEFNER TKDIKEGIPLPTKILVKPDRTFEIKIGQPTVSYFLKAAAGIEKGARQTGKEVAGLVTLKH VYEIARIKAQDEAFALQDVP LSSV VRSIIGSARSLGIRVVKDLSSEELAAFQKERAIFLA

 Tel: 1-631-559-9269    1-516-512-3133

 Email: [info@creative-biomart.com](mailto:info@creative-biomart.com)     Fax: 1-631-938-8127

 45-1 Ramsey Road, Shirley, NY 11967, USA



AQKEADLAAQEAAKK

**Applications**

Enzyme-linked Immunoabsorbent Assay  
Western Blot (Recombinant protein)  
Antibody Production  
Protein Array

**Notes**

Best use within three months from the date of receipt of this protein.

**Storage**

Store at -80 centigrade. Aliquot to avoid repeated freezing and thawing.

**Storage Buffer**

50 mM Tris-HCl, 10 mM reduced Glutathione, pH=8.0 in the elution buffer.

**GENE INFORMATION**

**Gene Name**

MRPL11 mitochondrial ribosomal protein L11 [ Homo sapiens ]

**Official Symbol**

MRPL11

**Synonyms**

MRPL11; mitochondrial ribosomal protein L11; 39S ribosomal protein L11, mitochondrial; L11MT; CGI-113; MRP-L11; MGC111024;

**Gene ID**

65003

**mRNA Refseq**

NM\_016050

**Protein Refseq**

NP\_057134

**MIM**

611826

**UniProt ID**

Q9Y3B7

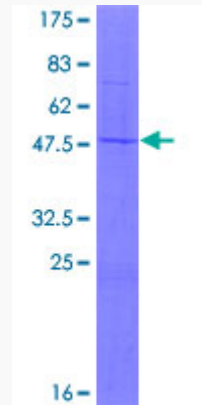
Tel: 1-631-559-9269 1-516-512-3133

Email: [info@creative-biomart.com](mailto:info@creative-biomart.com) Fax: 1-631-938-8127

45-1 Ramsey Road, Shirley, NY 11967, USA

**Quality Control**

**Testing:**



12.5% SDS-PAGE Stained with Coomassie Blue.

 Tel: 1-631-559-9269 1-516-512-3133

 Email: [info@creative-biomart.com](mailto:info@creative-biomart.com)  Fax: 1-631-938-8127

 45-1 Ramsey Road, Shirley, NY 11967, USA