

# Recombinant Full Length Human MRPL11 Protein, C-Flag-tagged

Cat. No. MRPL11-923HFL    Lot. No. (See product label)

## SPECIFICATION

<b>Product Overview</b>	Recombinant Full Length Human MRPL11 Protein, fused to Flag-tag at C-terminus, was expressed in Mammalian cells.
<b>Species</b>	Human
<b>Source</b>	Mammalian Cells
<b>Description</b>	This nuclear gene encodes a 39S subunit component of the mitochondrial ribosome. Alternative splicing results in multiple transcript variants. Pseudogenes for this gene are found on chromosomes 5 and 12.
<b>Form</b>	25 mM Tris HCl, pH 7.3, 100 mM glycine, 10% glycerol.
<b>Molecular Mass</b>	20.5 kDa
<b>AA Sequence</b>	MSKLGRAARGLRKPEVGGVIRAIVRAGLAMPGPPLGPVLGQRGVVSINQFCKEFNER TKDIKEGIPLPTKI LVKPDRTFEIKIGQPTVSYFLKAAAGIEKGARQTGKEVAGLVTLK HVYEIARIKAQDEAFALQDVPLSSV VRSIIGSARSLGIRVVKDLSSEELAAFQKERAIFLAAQKEADLAAQEAAKKTRTRPLE QKLISEEDLAANDILDYKDDDDKV
<b>Purity</b>	> 80% as determined by SDS-PAGE and Coomassie blue staining.
<b>Stability</b>	Stable for 12 months from the date of receipt of the product under proper storage and

 Tel: 1-631-559-9269    1-516-512-3133

 Email: [info@creative-biomart.com](mailto:info@creative-biomart.com)     Fax: 1-631-938-8127

 45-1 Ramsey Road, Shirley, NY 11967, USA

handling conditions. Avoid repeated freeze-thaw cycles.

**Storage** Store at -80 centigrade.

**Concentration** >50 ug/mL as determined by microplate BCA method.

**Preparation** Recombinant protein was captured through anti-DDK affinity column followed by conventional chromatography steps.

**Full Length** Full L.

## GENE INFORMATION

**Gene Name** MRPL11 mitochondrial ribosomal protein L11 [ Homo sapiens (human) ]

**Official Symbol** MRPL11

**Synonyms** L11MT; CGI-113; MRP-L11

**Gene ID** 65003

**mRNA Refseq** NM\_016050.5

**Protein Refseq** NP\_057134.1

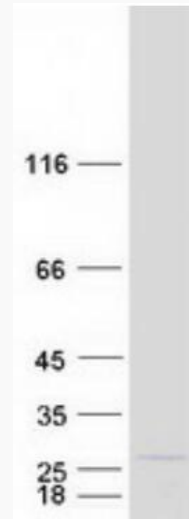
**MIM** 611826

**UniProt ID** Q9Y3B7

 Tel: 1-631-559-9269 1-516-512-3133

 Email: [info@creative-biomart.com](mailto:info@creative-biomart.com)  Fax: 1-631-938-8127

 45-1 Ramsey Road, Shirley, NY 11967, USA



Coomassie blue staining of purified MRPL11 protein.

Tel: 1-631-559-9269 1-516-512-3133

Email: [info@creative-biomart.com](mailto:info@creative-biomart.com) Fax: 1-631-938-8127

45-1 Ramsey Road, Shirley, NY 11967, USA