

Recombinant Human MRPL13 Protein, Myc/DDK-tagged, C13 and N15-labeled

Cat. No. MRPL13-4697H **Lot. No.** (See product label)

SPECIFICATION

Product Overview MRPL13 MS Standard C13 and N15-labeled recombinant protein (NP_054797) with a C-terminal MYC/DDK tag, was expressed in HEK293 cells.

Species Human

Source HEK293

Description Mammalian mitochondrial ribosomal proteins are encoded by nuclear genes and help in protein synthesis within the mitochondrion. Mitochondrial ribosomes (mitoribosomes) consist of a small 28S subunit and a large 39S subunit. They have an estimated 75% protein to rRNA composition compared to prokaryotic ribosomes, where this ratio is reversed. Another difference between mammalian mitoribosomes and prokaryotic ribosomes is that the latter contain a 5S rRNA. Among different species, the proteins comprising the mitoribosome differ greatly in sequence, and sometimes in biochemical properties, which prevents easy recognition by sequence homology. This gene encodes a 39S subunit protein.

Molecular Mass 20.7 kDa

AA Sequence MSSFSRAPQQWATFARIWYLLDGKMQPPGKLAAMASIRLQGLHKPVYHALSDCGD
 HVVIMNTRHIAFSGNKWEQKVYSSHTGYPPGFRQVTAACLHLRDPVAIVKLAIYGML
 PKNLHRRTMMERLHLFPDEYIPEDILKNLVEELPQPRKIPKRLDEYTDQEEIDAFRLW
 TPPEDYRLTRTRPLEQKLISEEDLAANDILDYKDDDDKV

 Tel: 1-631-559-9269 1-516-512-3133

 Email: info@creative-biomart.com  Fax: 1-631-938-8127

 45-1 Ramsey Road, Shirley, NY 11967, USA

Purity	> 80% as determined by SDS-PAGE and Coomassie blue staining
Stability	Stable for 3 months from receipt of products under proper storage and handling conditions.
Storage	Store at -80 centigrade. Avoid repeated freeze-thaw cycles.
Concentration	50 µg/mL as determined by BCA
Storage Buffer	100 mM glycine, 25 mM Tris-HCl, pH 7.3.

GENE INFORMATION

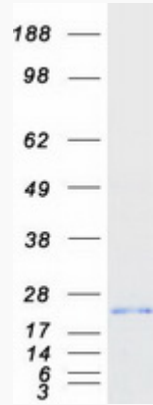
Gene Name	MRPL13 mitochondrial ribosomal protein L13 [Homo sapiens (human)]
Official Symbol	MRPL13
Synonyms	MRPL13; mitochondrial ribosomal protein L13; 39S ribosomal protein L13, mitochondrial; L13; L13A; L13mt; RPL13; RPML13; MRP-L13;
Gene ID	28998
mRNA Refseq	NM_014078
Protein Refseq	NP_054797
MIM	610200
UniProt ID	Q9BYD1

 Tel: 1-631-559-9269 1-516-512-3133

 Email: info@creative-biomart.com  Fax: 1-631-938-8127

 45-1 Ramsey Road, Shirley, NY 11967, USA

SDS-PAGE



 Tel: 1-631-559-9269 1-516-512-3133

 Email: info@creative-biomart.com  Fax: 1-631-938-8127

 45-1 Ramsey Road, Shirley, NY 11967, USA