

Recombinant Human MRPL13 Protein, GST-tagged

Cat. No. MRPL13-5557H **Lot. No.** (See product label)

SPECIFICATION

Product Overview	Human MRPL13 full-length ORF (AAH09190, 1 a.a. - 178 a.a.) recombinant protein with GST-tag at N-terminal.
Species	Human
Source	Wheat Germ
Description	Mammalian mitochondrial ribosomal proteins are encoded by nuclear genes and help in protein synthesis within the mitochondrion. Mitochondrial ribosomes (mitoribosomes) consist of a small 28S subunit and a large 39S subunit. They have an estimated 75% protein to rRNA composition compared to prokaryotic ribosomes, where this ratio is reversed. Another difference between mammalian mitoribosomes and prokaryotic ribosomes is that the latter contain a 5S rRNA. Among different species, the proteins comprising the mitoribosome differ greatly in sequence, and sometimes in biochemical properties, which prevents easy recognition by sequence homology. This gene encodes a 39S subunit protein. [provided by RefSeq
Molecular Mass	45.32 kDa
AA Sequence	MSSFSRAPQQWATFARIWYLLDGKMQPPGKLAAMASIRLQGLHKPVYHALSDCGD HVVIMNTRHIAFSGNKWEQKVYSSHTGYPGGFRQVTAACLHLRDPVAIVKLAIYGML PKNLHRRRTMMERLHLFPDEYIPEDILKNLVEELPQPRKIPKRLDEYQTQEEIDAFPLRW TPPEDYRL
Applications	Enzyme-linked Immunoabsorbent Assay

 Tel: 1-631-559-9269 1-516-512-3133

 Email: info@creative-biomart.com  Fax: 1-631-938-8127

 45-1 Ramsey Road, Shirley, NY 11967, USA

Western Blot (Recombinant protein)
 Antibody Production
 Protein Array

Notes	Best use within three months from the date of receipt of this protein.
Storage	Store at -80 centigrade. Aliquot to avoid repeated freezing and thawing.
Storage Buffer	50 mM Tris-HCl, 10 mM reduced Glutathione, pH=8.0 in the elution buffer.

GENE INFORMATION

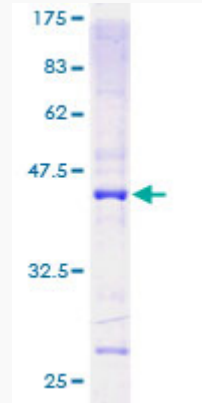
Gene Name	MRPL13 mitochondrial ribosomal protein L13 [Homo sapiens]
Official Symbol	MRPL13
Synonyms	MRPL13; mitochondrial ribosomal protein L13; 39S ribosomal protein L13, mitochondrial; L13; L13A; L13mt; RPL13; RPML13; MRP-L13;
Gene ID	28998
mRNA Refseq	NM_014078
Protein Refseq	NP_054797
MIM	610200
UniProt ID	Q9BYD1

 Tel: 1-631-559-9269 1-516-512-3133

 Email: info@creative-biomart.com  Fax: 1-631-938-8127

 45-1 Ramsey Road, Shirley, NY 11967, USA

**Quality Control
Testing:**



12.5% SDS-PAGE Stained with Coomassie Blue.

 Tel: 1-631-559-9269 1-516-512-3133

 Email: info@creative-biomart.com  Fax: 1-631-938-8127

 45-1 Ramsey Road, Shirley, NY 11967, USA