

Recombinant Human MRPL23 Protein, GST-tagged

Cat. No. MRPL23-5568H **Lot. No.** (See product label)

SPECIFICATION

Product Overview	Human MRPL23 full-length ORF (AAH27710, 1 a.a. - 153 a.a.) recombinant protein with GST-tag at N-terminal.
Species	Human
Source	Wheat Germ
Description	Mammalian mitochondrial ribosomal proteins are encoded by nuclear genes and help in protein synthesis within the mitochondrion. Mitochondrial ribosomes (mitoribosomes) consist of a small 28S subunit and a large 39S subunit. They have an estimated 75% protein to rRNA composition compared to prokaryotic ribosomes, where this ratio is reversed. Another difference between mammalian mitoribosomes and prokaryotic ribosomes is that the latter contain a 5S rRNA. Among different species, the proteins comprising the mitoribosome differ greatly in sequence, and sometimes in biochemical properties, which prevents easy recognition by sequence homology. This gene encodes a 39S subunit protein. The gene is biallelically expressed, despite its location within a region of imprinted genes on chromosome 11. [provided by RefSeq]
Molecular Mass	42.68 kDa
AA Sequence	MARNVVYPLYRLGGPQLRVFRTNFFIQLVVRPGVAQPEDTVQFRIPMEMTRVDLRNY LEGIYNVPVAAVRTRVQHGSNKRRDRHNVRIKKPDYKVAYVQLAHGQTFTFPDLFP EKDESPEGSAADDLYSMLEEERQQRQSSDPRRGGVPSWFGL

 Tel: 1-631-559-9269 1-516-512-3133

 Email: info@creative-biomart.com  Fax: 1-631-938-8127

 45-1 Ramsey Road, Shirley, NY 11967, USA

Applications	Enzyme-linked Immunoabsorbent Assay Western Blot (Recombinant protein) Antibody Production Protein Array
Notes	Best use within three months from the date of receipt of this protein.
Storage	Store at -80 centigrade. Aliquot to avoid repeated freezing and thawing.
Storage Buffer	50 mM Tris-HCl, 10 mM reduced Glutathione, pH=8.0 in the elution buffer.

GENE INFORMATION

Gene Name	MRPL23 mitochondrial ribosomal protein L23 [Homo sapiens]
Official Symbol	MRPL23
Synonyms	MRPL23; mitochondrial ribosomal protein L23; RPL23L; 39S ribosomal protein L23, mitochondrial; L23MRP; L23mt; MRP-L23; L23 mitochondrial-related protein; ribosomal protein related to L23 (mitochondrial); RPL23; FLJ45387;
Gene ID	6150
mRNA Refseq	NM_021134
Protein Refseq	NP_066957
MIM	600789
UniProt ID	Q16540

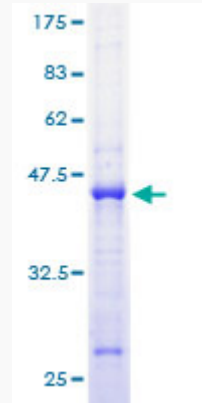
 Tel: 1-631-559-9269 1-516-512-3133

 Email: info@creative-biomart.com  Fax: 1-631-938-8127

 45-1 Ramsey Road, Shirley, NY 11967, USA

Quality Control

Testing:



12.5% SDS-PAGE Stained with Coomassie Blue.

 Tel: 1-631-559-9269 1-516-512-3133

 Email: info@creative-biomart.com  Fax: 1-631-938-8127

 45-1 Ramsey Road, Shirley, NY 11967, USA