

## Recombinant Human MRPL24 Protein, GST-tagged

**Cat. No.** MRPL24-5569H    **Lot. No.** (See product label)

### SPECIFICATION

<b>Product Overview</b>	Human MRPL24 full-length ORF ( NP_078816.2, 1 a.a. - 216 a.a.) recombinant protein with GST-tag at N-terminal.
<b>Species</b>	Human
<b>Source</b>	Wheat Germ
<b>Description</b>	Mammalian mitochondrial ribosomal proteins are encoded by nuclear genes and help in protein synthesis within the mitochondrion. Mitochondrial ribosomes (mitoribosomes) consist of a small 28S subunit and a large 39S subunit. They have an estimated 75% protein to rRNA composition compared to prokaryotic ribosomes, where this ratio is reversed. Another difference between mammalian mitoribosomes and prokaryotic ribosomes is that the latter contain a 5S rRNA. Among different species, the proteins comprising the mitoribosome differ greatly in sequence, and sometimes in biochemical properties, which prevents easy recognition by sequence homology. This gene encodes a 39S subunit protein which is more than twice the size of its E.coli counterpart (EcoL24). Sequence analysis identified two transcript variants that encode the same protein. [provided by RefSeq]
<b>Molecular Mass</b>	51.3 kDa
<b>AA Sequence</b>	MRLSALLALASKVTLPPHYRYGMSPPGVSADKRKNPPWIRRRPVVVEPISDEDWYL FCGDTVEILEGKDAGKQKVVQVIRQRNWVVVGLNTHYRYIGKTMDYRGTMIPSE APLLHRQVKLVDPMDRKPTEIEWRFTEAGERVVRVSTRSGRIIPKPEFPRADGIVPET

 Tel: 1-631-559-9269    1-516-512-3133

 Email: [info@creative-biomart.com](mailto:info@creative-biomart.com)     Fax: 1-631-938-8127

 45-1 Ramsey Road, Shirley, NY 11967, USA

WIDGPKDTSVEDALERTYVPCLKTLQEEVMEAMGIKETRKYKKVYWY

**Applications**

Enzyme-linked Immunoabsorbent Assay  
 Western Blot (Recombinant protein)  
 Antibody Production  
 Protein Array

**Notes**

Best use within three months from the date of receipt of this protein.

**Storage**

Store at -80 centigrade. Aliquot to avoid repeated freezing and thawing.

**Storage Buffer**

50 mM Tris-HCl, 10 mM reduced Glutathione, pH=8.0 in the elution buffer.

## GENE INFORMATION

**Gene Name**

MRPL24 mitochondrial ribosomal protein L24 [ Homo sapiens ]

**Official Symbol**


MRPL24

**Synonyms**

MRPL24; mitochondrial ribosomal protein L24; MRP-L18;

**Gene ID**

64991

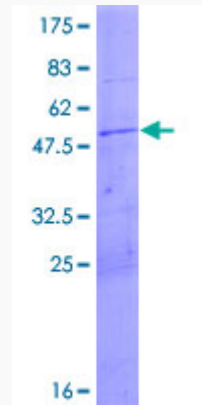
 Tel: 1-631-559-9269 1-516-512-3133

 Email: [info@creative-biomart.com](mailto:info@creative-biomart.com)  Fax: 1-631-938-8127

 45-1 Ramsey Road, Shirley, NY 11967, USA

**Quality Control**

**Testing:**



12.5% SDS-PAGE Stained with Coomassie Blue.

 Tel: 1-631-559-9269 1-516-512-3133

 Email: [info@creative-biomart.com](mailto:info@creative-biomart.com)  Fax: 1-631-938-8127

 45-1 Ramsey Road, Shirley, NY 11967, USA