

Recombinant Human MRPL3 Protein, GST-tagged

Cat. No. MRPL3-5573H Lot. No. (See product label)

SPECIFICATION

Product Overview	Human MRPL3 full-length ORF (NP_009139.1, 1 a.a. - 348 a.a.) recombinant protein with GST-tag at N-terminal.
Species	Human
Source	Wheat Germ
Description	Mammalian mitochondrial ribosomal proteins are encoded by nuclear genes and help in protein synthesis within the mitochondrion. Mitochondrial ribosomes (mitoribosomes) consist of a small 28S subunit and a large 39S subunit. They have an estimated 75% protein to rRNA composition compared to prokaryotic ribosomes, where this ratio is reversed. Another difference between mammalian mitoribosomes and prokaryotic ribosomes is that the latter contain a 5S rRNA. Among different species, the proteins comprising the mitoribosome differ greatly in sequence, and sometimes in biochemical properties, which prevents easy recognition by sequence homology. This gene encodes a 39S subunit protein that belongs to the L3P ribosomal protein family. A pseudogene corresponding to this gene is found on chromosome 13q. [provided by RefSeq]
Molecular Mass	65 kDa
AA Sequence	MPGWRLLTQVGAQVLGRLGDGLGAALGPGNRTHIWLWFVRGLHGKSGTWWDEHLS EENVVPIKQLVSDDEKAQLASKLCLPKDEPWPIHPWEPGSFRVGLIALKLGMMPLWT KDGQKHVVTLQVQDCHVLKYTSKENCNGKMATLSVGGKTVSRFRKATSILEFYRE

 Tel: 1-631-559-9269 1-516-512-3133

 Email: info@creative-biomart.com  Fax: 1-631-938-8127

 45-1 Ramsey Road, Shirley, NY 11967, USA

LGLPPKQTVKIFNITDNAAIKPGTPLYAAHFRPGQYVDVTAKTIGKGFQGVMKRWGF
 KGQPATHGQTKTHRRPGAVATGDIGRVWPGTKMPGKMGNIYRTEYGLKVWRINTK
 HNIIYVNGSVPGHKNCLVKVKDSKLPAYKDLGKNLPPFTYFPDGDEEELPEDLYDEN
 VCQPGAPSITFA

Applications	Enzyme-linked Immunoabsorbent Assay Western Blot (Recombinant protein) Antibody Production Protein Array
Notes	Best use within three months from the date of receipt of this protein.
Storage	Store at -80 centigrade. Aliquot to avoid repeated freezing and thawing.
Storage Buffer	50 mM Tris-HCl, 10 mM reduced Glutathione, pH=8.0 in the elution buffer.

GENE INFORMATION

Gene Name	MRPL3 mitochondrial ribosomal protein L3 [Homo sapiens]
Official Symbol	MRPL3
Synonyms	MRPL3; mitochondrial ribosomal protein L3; RPML3; 39S ribosomal protein L3, mitochondrial; MRL3; L3mt; MRP-L3; mitochondrial 60S ribosomal protein L3; COXPD9;
Gene ID	11222
mRNA Refseq	NM_007208
Protein Refseq	NP_009139

 Tel: 1-631-559-9269 1-516-512-3133

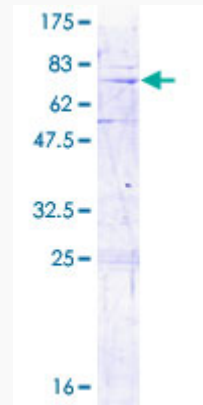
 Email: info@creative-biomart.com  Fax: 1-631-938-8127

 45-1 Ramsey Road, Shirley, NY 11967, USA

MIM 607118

UniProt ID P09001

**Quality Control
Testing:**



12.5% SDS-PAGE Stained with Coomassie Blue.

 Tel: 1-631-559-9269 1-516-512-3133

 Email: info@creative-biomart.com  Fax: 1-631-938-8127

 45-1 Ramsey Road, Shirley, NY 11967, USA