

## Recombinant Human MRPL30 Protein, GST-tagged

**Cat. No.** MRPL30-5574H    **Lot. No.** (See product label)

### SPECIFICATION

**Product Overview**      Human MRPL30 full-length ORF ( NP\_660213.1, 1 a.a. - 161 a.a.) recombinant protein with GST-tag at N-terminal.

**Species**                      Human

**Source**                        Wheat Germ

**Description**

Mammalian mitochondrial ribosomal proteins are encoded by nuclear genes and help in protein synthesis within the mitochondrion. Mitochondrial ribosomes (mitoribosomes) consist of a small 28S subunit and a large 39S subunit. They have an estimated 75% protein to rRNA composition compared to prokaryotic ribosomes, where this ratio is reversed. Another difference between mammalian mitoribosomes and prokaryotic ribosomes is that the latter contain a 5S rRNA. Among different species, the proteins comprising the mitoribosome differ greatly in sequence, and sometimes in biochemical properties, which prevents easy recognition by sequence homology. This gene encodes a 39S subunit protein. Sequence analysis identified at least two transcript variants encoding the same protein. Pseudogenes corresponding to this gene are found on chromosomes 6p and 12p. [provided by RefSeq

**Molecular Mass**            44.9 kDa

**AA Sequence**

MAGILRLVVQWPPGRLQVTGKVESLICTDWIRHKFTRSRIPEKVFQASPEDHEKYG  
 GDPQNPHKLHIVTRIKSTRRRPYWEKDIIKMLGLEKAHTPQVHKNIPSVNAKLVVKH  
 LIRIKPLKLPQGLPAEENMSNTCLKSTGELVVQWHLKPVEQKAHES

 Tel: 1-631-559-9269    1-516-512-3133

 Email: [info@creative-biomart.com](mailto:info@creative-biomart.com)     Fax: 1-631-938-8127

 45-1 Ramsey Road, Shirley, NY 11967, USA

<b>Applications</b>	Enzyme-linked Immunoabsorbent Assay Western Blot (Recombinant protein) Antibody Production Protein Array
<b>Notes</b>	Best use within three months from the date of receipt of this protein.
<b>Storage</b>	Store at -80 centigrade. Aliquot to avoid repeated freezing and thawing.
<b>Storage Buffer</b>	50 mM Tris-HCl, 10 mM reduced Glutathione, pH=8.0 in the elution buffer.
<b>GENE INFORMATION</b>	
<b>Gene Name</b>	MRPL30 mitochondrial ribosomal protein L30 [ Homo sapiens (human) ]
<b>Official Symbol</b>	MRPL30
<b>Synonyms</b>	MRPL30; mitochondrial ribosomal protein L30; L28MT; L30MT; MRPL28; RPML28; MRP-L28; MRP-L30; MRPL28M; 39S ribosomal protein L30, mitochondrial; 39S ribosomal protein L28, mitochondrial; mitochondrial large ribosomal subunit protein uL30m
<b>Gene ID</b>	51263
<b>mRNA Refseq</b>	NM_145212
<b>Protein Refseq</b>	NP_660213
<b>MIM</b>	611838
<b>UniProt ID</b>	Q8TCC3

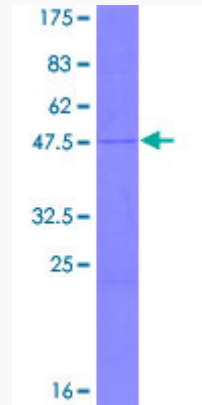
 Tel: 1-631-559-9269 1-516-512-3133

 Email: [info@creative-biomart.com](mailto:info@creative-biomart.com)  Fax: 1-631-938-8127

 45-1 Ramsey Road, Shirley, NY 11967, USA

**Quality Control**

**Testing:**



12.5% SDS-PAGE Stained with Coomassie Blue.

 Tel: 1-631-559-9269 1-516-512-3133

 Email: [info@creative-biomart.com](mailto:info@creative-biomart.com)  Fax: 1-631-938-8127

 45-1 Ramsey Road, Shirley, NY 11967, USA