

## Recombinant Human MRPL38 Protein, GST-tagged

Cat. No. MRPL38-5581H Lot. No. (See product label)

### SPECIFICATION

<b>Product Overview</b>	Human MRPL38 full-length ORF ( NP_115867.1, 1 a.a. - 346 a.a.) recombinant protein with GST-tag at N-terminal.
<b>Species</b>	Human
<b>Source</b>	Wheat Germ
<b>Description</b>	Mammalian mitochondrial ribosomal proteins are encoded by nuclear genes and help in protein synthesis within the mitochondrion. Mitochondrial ribosomes (mitoribosomes) consist of a small 28S subunit and a large 39S subunit. They have an estimated 75% protein to rRNA composition compared to prokaryotic ribosomes, where this ratio is reversed. Another difference between mammalian mitoribosomes and prokaryotic ribosomes is that the latter contain a 5S rRNA. Among different species, the proteins comprising the mitoribosome differ greatly in sequence, and sometimes in biochemical properties, which prevents easy recognition by sequence homology. This gene encodes a 39S subunit protein. [provided by RefSeq]
<b>Molecular Mass</b>	67.2 kDa
<b>AA Sequence</b>	MPNSDIDLSNLERLEKYRSFDRYRRRAEQEAQAPHWWRTYREYFGEKTDPKKEKIDI GLPPPKVSRTQQLLERKQAIQELRANVEEERAARLRTASVPLDAVRAEWERTCGPY HKQRLAEYYGLYRDLFHGATFVPRVPLHVAYAVGEDDLMPVYCGNEVTPTEAAQAP EVTYEAEEGSLWTLTLLTSLDGHLLEPDAEYLHWLLTNIPGNRVAEGQVTCPYLPPFP ARGSGIHRLAFLLFKQDQPIDFSEDARSPCYQLAQRTRTFDFYKKHQETMTPAGL

 Tel: 1-631-559-9269 1-516-512-3133

 Email: [info@creative-biomart.com](mailto:info@creative-biomart.com)  Fax: 1-631-938-8127

 45-1 Ramsey Road, Shirley, NY 11967, USA

SFFQCRWDDSVTYIFHQLLDMREPVFEFVRPPPYHPKQKRFPHRQPLRYLDRYRDS  
HEPTYGIY

**Applications**  
Enzyme-linked Immunoabsorbent Assay  
Western Blot (Recombinant protein)  
Antibody Production  
Protein Array

**Notes**  
Best use within three months from the date of receipt of this protein.

**Storage**  
Store at -80 centigrade. Aliquot to avoid repeated freezing and thawing.

**Storage Buffer**  
50 mM Tris-HCl, 10 mM reduced Glutathione, pH=8.0 in the elution buffer.

## GENE INFORMATION

**Gene Name**  
MRPL38 mitochondrial ribosomal protein L38 [ Homo sapiens ]

**Official Symbol**  
MRPL38

**Synonyms**  
MRPL38; mitochondrial ribosomal protein L38; 39S ribosomal protein L38, mitochondrial; HSPC262; MGC4810; MRP L3; RPML3; L38MT; MRP-L3; MRP-L38; FLJ13996; KIAA1863;

**Gene ID**  
64978

**mRNA Refseq**  
NM\_032478

**Protein Refseq**  
NP\_115867

**MIM**  
611844

 Tel: 1-631-559-9269 1-516-512-3133

 Email: [info@creative-biomart.com](mailto:info@creative-biomart.com)  Fax: 1-631-938-8127

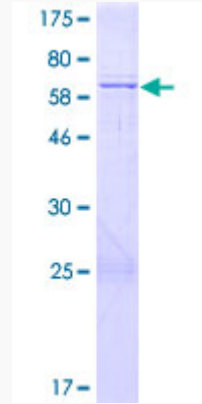
 45-1 Ramsey Road, Shirley, NY 11967, USA

UniProt ID

Q96DV4

Quality Control

Testing:



12.5% SDS-PAGE Stained with Coomassie Blue.

 Tel: 1-631-559-9269 1-516-512-3133

 Email: [info@creative-biomart.com](mailto:info@creative-biomart.com)  Fax: 1-631-938-8127

 45-1 Ramsey Road, Shirley, NY 11967, USA