

Recombinant Human MRPL38 Protein, Myc/DDK-tagged, C13 and N15-labeled

Cat. No. MRPL38-5895H **Lot. No.** (See product label)

SPECIFICATION

Product Overview	MRPL38 MS Standard C13 and N15-labeled recombinant protein (NP_115867) with a C-terminal MYC/DDK tag, was expressed in HEK293 cells.
Species	Human
Source	HEK293
Description	Mammalian mitochondrial ribosomal proteins are encoded by nuclear genes and help in protein synthesis within the mitochondrion. Mitochondrial ribosomes (mitoribosomes) consist of a small 28S subunit and a large 39S subunit. They have an estimated 75% protein to rRNA composition compared to prokaryotic ribosomes, where this ratio is reversed. Another difference between mammalian mitoribosomes and prokaryotic ribosomes is that the latter contain a 5S rRNA. Among different species, the proteins comprising the mitoribosome differ greatly in sequence, and sometimes in biochemical properties, which prevents easy recognition by sequence homology. This gene encodes a 39S subunit protein.
Molecular Mass	44.4 kDa
AA Sequence	MPNSDIDLNLERLEKYRSFDRYRRRAEQEAQAPHWWRTYREYFGEKTPKEKIDI GLPPPKVSR TQQLERKQAIQELRANVEEERAARLRTASVPLDAVRAEWERTCGPY HKQRLAEYYGLYRDLFHGATFVPRVPLHVAYAVGEDDLMPVYCGNEVTPTEAAQAP EVTYEAEEGSLWTLTLLTSLDGHLLLEPDAEYHLWLLTNIPGNRVAEGQVTCPYLPPFP

 Tel: 1-631-559-9269 1-516-512-3133

 Email: info@creative-biomart.com  Fax: 1-631-938-8127

 45-1 Ramsey Road, Shirley, NY 11967, USA

ARGSGIHRLAFLLFKQDQPIDFSEDARSPCYQLAQRTRTFDFYKKHQETMTPAGL
SFFQCRWDDSVTYIFHQLLDMREPVFEFVRPPPYHPKQKRFPHRQPLRYLDRYRDS
HEPTYGIYTRTRPLEQKLISEEDLAANDILDYKDDDDKV

Purity > 80% as determined by SDS-PAGE and Coomassie blue staining

Stability Stable for 3 months from receipt of products under proper storage and handling conditions.

Storage Store at -80 centigrade. Avoid repeated freeze-thaw cycles.

Concentration 50 µg/mL as determined by BCA

Storage Buffer 100 mM glycine, 25 mM Tris-HCl, pH 7.3.

GENE INFORMATION

Gene Name MRPL38 mitochondrial ribosomal protein L38 [Homo sapiens (human)]

Official Symbol MRPL38

Synonyms MRPL38; mitochondrial ribosomal protein L38; 39S ribosomal protein L38, mitochondrial; HSPC262; MGC4810; MRP L3; RPML3; L38MT; MRP-L3; MRP-L38; FLJ13996; KIAA1863;

Gene ID 64978

mRNA Refseq NM_032478

Protein Refseq NP_115867

 Tel: 1-631-559-9269 1-516-512-3133

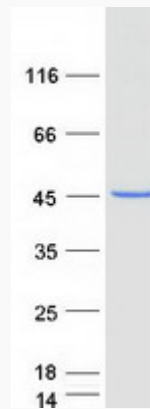
 Email: info@creative-biomart.com  Fax: 1-631-938-8127

 45-1 Ramsey Road, Shirley, NY 11967, USA

MIM 611844

UniProt ID Q96DV4

SDS-PAGE



 Tel: 1-631-559-9269 1-516-512-3133

 Email: info@creative-biomart.com  Fax: 1-631-938-8127

 45-1 Ramsey Road, Shirley, NY 11967, USA