

Recombinant Human MRPL39 Protein, Myc/DDK-tagged, C13 and N15-labeled

Cat. No. MRPL39-5705H **Lot. No.** (See product label)

SPECIFICATION

Product Overview	MRPL39 MS Standard C13 and N15-labeled recombinant protein (NP_059142) with a C-terminal MYC/DDK tag, was expressed in HEK293 cells.
Species	Human
Source	HEK293
Description	Mammalian mitochondrial ribosomal proteins are encoded by nuclear genes and help in protein synthesis within the mitochondrion. Mitochondrial ribosomes (mitoribosomes) consist of a small 28S subunit and a large 39S subunit. They have an estimated 75% protein to rRNA composition compared to prokaryotic ribosomes, where this ratio is reversed. Another difference between mammalian mitoribosomes and prokaryotic ribosomes is that the latter contain a 5S rRNA. Among different species, the proteins comprising the mitoribosome differ greatly in sequence, and sometimes in biochemical properties, which prevents easy recognition by sequence homology. This gene encodes a 39S subunit protein. Two transcript variants encoding distinct isoforms have been described. A pseudogene corresponding to this gene is found on chromosome 5q.
Molecular Mass	38.7 kDa
AA Sequence	MEALAMGSRALRLWLVPGGGIKWRFIATSPASQLSPTELTEMRNDLNFNKEKARQL SLTPRTEKIEVKHVGKTDPGTVFVMNKNISTPYSCAMHLSEWYCRKSILALVDGQPW

 Tel: 1-631-559-9269 1-516-512-3133

 Email: info@creative-biomart.com  Fax: 1-631-938-8127

 45-1 Ramsey Road, Shirley, NY 11967, USA

DMYKPLTKSCEIKFLTFKDCDPGEVKNKAYWRSCAMMMGCVIERAFKDEYMNLVRA
 PEVVISGAFICYDVVLDSKLDEWMPTKENLRSFTKDAHAIYKDLPFETLEVEAKVAL
 EIFQHISKYKVDFFIEEKASQNERIVKLHRIGDFIDVSEGPLIPRTSICFQYEVSAVHNLQ
 PTQPSLIRRFQGVSLPVHLRAHFTIWDKLLERSRKMVTEDQSKATEECTSTTRTRPL
 EQKLISEEDLAANDILDYKDDDDKV

Purity > 80% as determined by SDS-PAGE and Coomassie blue staining

Stability Stable for 3 months from receipt of products under proper storage and handling conditions.

Storage Store at -80 centigrade. Avoid repeated freeze-thaw cycles.

Concentration 50 µg/mL as determined by BCA

Storage Buffer 100 mM glycine, 25 mM Tris-HCl, pH 7.3.

GENE INFORMATION

Gene Name MRPL39 mitochondrial ribosomal protein L39 [Homo sapiens (human)]

Official Symbol MRPL39

Synonyms MRPL39; mitochondrial ribosomal protein L39; RPML5; MRP-L5; PRED22; PRED66; FLJ20451; 39S ribosomal protein L39, mitochondrial; 39S ribosomal protein L5, mitochondrial; mitochondrial large ribosomal subunit protein mL39

Gene ID 54148

mRNA Refseq NM_017446

 Tel: 1-631-559-9269 1-516-512-3133

 Email: info@creative-biomart.com  Fax: 1-631-938-8127

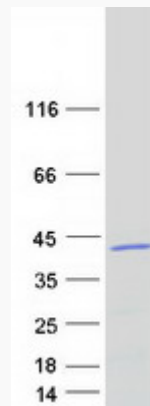
 45-1 Ramsey Road, Shirley, NY 11967, USA

Protein Refseq NP_059142

MIM 611845

UniProt ID Q9NYK5

SDS-PAGE



 Tel: 1-631-559-9269 1-516-512-3133

 Email: info@creative-biomart.com  Fax: 1-631-938-8127

 45-1 Ramsey Road, Shirley, NY 11967, USA