

## Recombinant Human MRPL41 Protein, GST-tagged

**Cat. No.** MRPL41-5586H    **Lot. No.** (See product label)

### SPECIFICATION

<b>Product Overview</b>	Human MRPL41 full-length ORF ( NP_115866.1, 1 a.a. - 137 a.a.) recombinant protein with GST-tag at N-terminal.
<b>Species</b>	Human
<b>Source</b>	Wheat Germ
<b>Description</b>	Mammalian mitochondrial ribosomal proteins are encoded by nuclear genes and help in protein synthesis within the mitochondrion. Mitochondrial ribosomes (mitoribosomes) consist of a small 28S subunit and a large 39S subunit. They have an estimated 75% protein to rRNA composition compared to prokaryotic ribosomes, where this ratio is reversed. Another difference between mammalian mitoribosomes and prokaryotic ribosomes is that the latter contain a 5S rRNA. Among different species, the proteins comprising the mitoribosome differ greatly in sequence, and sometimes in biochemical properties, which prevents easy recognition by sequence homology. This gene encodes a 39S subunit protein that belongs to the YmL27 ribosomal protein family. [provided by RefSeq]
<b>Molecular Mass</b>	41.8 kDa
<b>AA Sequence</b>	MGVLA AAAARCLV R GADRMSK WTSKRGPR SFRGRKGRGAKGIGFLTSGWRFVQIKE MVPEFVVPDLTGFKLKPYSYLAP ESEETPLTAAQLFSEAVAPAIEKDFKDGTFDPD NLEKYGF EPTQEGKLFQLYPRNFLR
<b>Applications</b>	Enzyme-linked Immunoabsorbent Assay

 Tel: 1-631-559-9269    1-516-512-3133

 Email: [info@creative-biomart.com](mailto:info@creative-biomart.com)     Fax: 1-631-938-8127

 45-1 Ramsey Road, Shirley, NY 11967, USA

Western Blot (Recombinant protein)  
 Antibody Production  
 Protein Array

<b>Notes</b>	Best use within three months from the date of receipt of this protein.
<b>Storage</b>	Store at -80 centigrade. Aliquot to avoid repeated freezing and thawing.
<b>Storage Buffer</b>	50 mM Tris-HCl, 10 mM reduced Glutathione, pH=8.0 in the elution buffer.

## GENE INFORMATION

<b>Gene Name</b>	MRPL41 mitochondrial ribosomal protein L41 [ Homo sapiens ]
<b>Official Symbol</b>	MRPL41
<b>Synonyms</b>	BMRP; PIG3; MRPL27; RPML27; MRP-L27
<b>Gene ID</b>	64975
<b>mRNA Refseq</b>	NM_032477
<b>Protein Refseq</b>	NP_115866
<b>MIM</b>	611846
<b>UniProt ID</b>	Q8IXM3

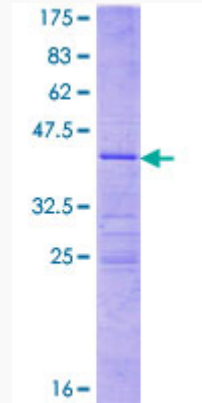
 Tel: 1-631-559-9269 1-516-512-3133

 Email: [info@creative-biomart.com](mailto:info@creative-biomart.com)  Fax: 1-631-938-8127

 45-1 Ramsey Road, Shirley, NY 11967, USA

**Quality Control**

**Testing:**



12.5% SDS-PAGE Stained with Coomassie Blue.

 Tel: 1-631-559-9269 1-516-512-3133

 Email: [info@creative-biomart.com](mailto:info@creative-biomart.com)  Fax: 1-631-938-8127

 45-1 Ramsey Road, Shirley, NY 11967, USA