

## Recombinant Human MRPL44 Protein, GST-tagged

Cat. No. MRPL44-5588H Lot. No. (See product label)

### SPECIFICATION

<b>Product Overview</b>	Human MRPL44 full-length ORF ( NP_075066.1, 1 a.a. - 332 a.a.) recombinant protein with GST-tag at N-terminal.
<b>Species</b>	Human
<b>Source</b>	Wheat Germ
<b>Description</b>	<p>Mammalian mitochondrial ribosomal proteins are encoded by nuclear genes and help in protein synthesis within the mitochondrion. Mitochondrial ribosomes (mitoribosomes) consist of a small 28S subunit and a large 39S subunit. They have an estimated 75% protein to rRNA composition compared to prokaryotic ribosomes, where this ratio is reversed. Another difference between mammalian mitoribosomes and prokaryotic ribosomes is that the latter contain a 5S rRNA. Among different species, the proteins comprising the mitoribosome differ greatly in sequence, and sometimes in biochemical properties, which prevents easy recognition by sequence homology. This gene encodes a 39S subunit protein. [provided by RefSeq</p>
<b>Molecular Mass</b>	63.9 kDa
<b>AA Sequence</b>	MASGLVRLQLQQGHRCLLAPVAPKLVPPVRGVKKGFRAAFQKELERQRLLRCP PVPVRRSEKPNWDYHAEIQAFGHRQLQENFSLDLLKTAQVNSCYIKSEEAKRQQLGIE KEAVLLNLKSNQELSEQGTSFSQTCLTQFLEDEYPDMPTEGIKNLVDFLTGEEVVCH VARNLAVEQLTLSEFPVPPAVLQQTFFAVIGALLQSSGPERTALFIRDFLITQMTGKEL FEMWKIINPMGLLVEELKKNVSAPE SRLTRQSGGTTALPLYFVGLYCDKKLIAEGPG

Tel: 1-631-559-9269 1-516-512-3133

Email: [info@creative-biomart.com](mailto:info@creative-biomart.com) Fax: 1-631-938-8127

45-1 Ramsey Road, Shirley, NY 11967, USA

ETVLVAEEEEARVALRKLYGFTENRRPWNYSKPKETLRAEKSITAS

**Applications**

Enzyme-linked Immunoabsorbent Assay  
 Western Blot (Recombinant protein)  
 Antibody Production  
 Protein Array

**Notes**

Best use within three months from the date of receipt of this protein.

**Storage**

Store at -80 centigrade. Aliquot to avoid repeated freezing and thawing.

**Storage Buffer**

50 mM Tris-HCl, 10 mM reduced Glutathione, pH=8.0 in the elution buffer.

## GENE INFORMATION

**Gene Name**

MRPL44 mitochondrial ribosomal protein L44 [ Homo sapiens (human) ]

**Official Symbol**

MRPL44

**Synonyms**

MRPL44; mitochondrial ribosomal protein L44; L44MT; COXPD16; MRP-L44; 39S ribosomal protein L44, mitochondrial; mitochondrial large ribosomal subunit protein mL44; EC 3.1.26.-

**Gene ID**

65080

**mRNA Refseq**

NM\_022915

**Protein Refseq**

NP\_075066

**MIM**

611849

 Tel: 1-631-559-9269 1-516-512-3133

 Email: [info@creative-biomart.com](mailto:info@creative-biomart.com)  Fax: 1-631-938-8127

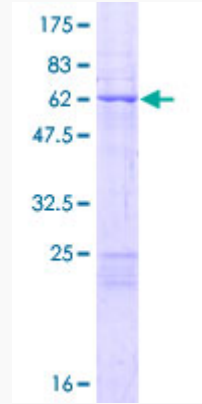
 45-1 Ramsey Road, Shirley, NY 11967, USA

UniProt ID


Q9H9J2

Quality Control

Testing:



12.5% SDS-PAGE Stained with Coomassie Blue.

 Tel: 1-631-559-9269 1-516-512-3133

 Email: [info@creative-biomart.com](mailto:info@creative-biomart.com)  Fax: 1-631-938-8127

 45-1 Ramsey Road, Shirley, NY 11967, USA