

Recombinant Human MRPL49 Protein, GST-tagged

Cat. No. MRPL49-5592H **Lot. No.** (See product label)

SPECIFICATION

Product Overview	Human MRPL49 full-length ORF (NP_004918.1, 1 a.a. - 166 a.a.) recombinant protein with GST-tag at N-terminal.
Species	Human
Source	Wheat Germ
Description	<p>Mammalian mitochondrial ribosomal proteins are encoded by nuclear genes and help in protein synthesis within the mitochondrion. Mitochondrial ribosomes (mitoribosomes) consist of a small 28S subunit and a large 39S subunit. They have an estimated 75% protein to rRNA composition compared to prokaryotic ribosomes, where this ratio is reversed. Another difference between mammalian mitoribosomes and prokaryotic ribosomes is that the latter contain a 5S rRNA. Among different species, the proteins comprising the mitoribosome differ greatly in sequence, and sometimes in biochemical properties, which prevents easy recognition by sequence homology. This gene encodes a 39S subunit protein. This gene and the gene for the HRD1 protein use in their respective 3 UTRs some of the same genomic sequence. Pseudogenes corresponding to this gene are found on chromosomes 5q and 8p. [provided by RefSeq]</p>
Molecular Mass	45.6 kDa
AA Sequence	MAATMFRATLRGWRTGVQRCGLRLLSQTQGPPDYPRFVESVDEYQFVERLLPAT RIPDPPKHEHYPTPSGWQPPRDPPPPLPYFVRRSRMHNIPVYKDITHGNRQMTVIR

 Tel: 1-631-559-9269 1-516-512-3133

 Email: info@creative-biomart.com  Fax: 1-631-938-8127

 45-1 Ramsey Road, Shirley, NY 11967, USA

KVEGDIALQKDVEDFLSPLLGKTPVTQVNEVTGTLRIKGYFDQELKAWLLEKGF

Applications

Enzyme-linked Immunoabsorbent Assay
 Western Blot (Recombinant protein)
 Antibody Production
 Protein Array

Notes

Best use within three months from the date of receipt of this protein.

Storage

Store at -80 centigrade. Aliquot to avoid repeated freezing and thawing.

Storage Buffer

50 mM Tris-HCl, 10 mM reduced Glutathione, pH=8.0 in the elution buffer.

GENE INFORMATION

Gene Name

MRPL49 mitochondrial ribosomal protein L49 [Homo sapiens]

Official Symbol

MRPL49

Synonyms

MRPL49; mitochondrial ribosomal protein L49; C11orf4, chromosome 11 open reading frame 4; 39S ribosomal protein L49, mitochondrial; L49mt; neighbor of FAU; next to FAU; NOF; NOF1; C11orf4; MRP-L49; MGC10656;

Gene ID

740

mRNA Refseq

NM_004927

Protein Refseq

NP_004918

MIM

606866

 Tel: 1-631-559-9269 1-516-512-3133

 Email: info@creative-biomart.com  Fax: 1-631-938-8127

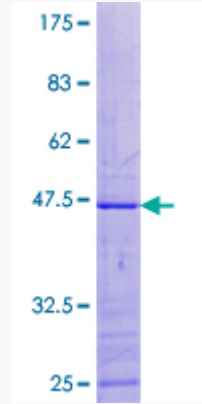
 45-1 Ramsey Road, Shirley, NY 11967, USA

UniProt ID

Q13405

Quality Control

Testing:



12.5% SDS-PAGE Stained with Coomassie Blue.

 Tel: 1-631-559-9269 1-516-512-3133

 Email: info@creative-biomart.com  Fax: 1-631-938-8127

 45-1 Ramsey Road, Shirley, NY 11967, USA