

Recombinant Human MRPL9 Protein, GST-tagged

Cat. No. MRPL9-5598H Lot. No. (See product label)

SPECIFICATION

Product Overview	Human MRPL9 full-length ORF (AAH04517, 1 a.a. - 267 a.a.) recombinant protein with GST-tag at N-terminal.
Species	Human
Source	Wheat Germ
Description	Mammalian mitochondrial ribosomal proteins are encoded by nuclear genes and help in protein synthesis within the mitochondrion. Mitochondrial ribosomes (mitoribosomes) consist of a small 28S subunit and a large 39S subunit. They have an estimated 75% protein to rRNA composition compared to prokaryotic ribosomes, where this ratio is reversed. Another difference between mammalian mitoribosomes and prokaryotic ribosomes is that the latter contain a 5S rRNA. Among different species, the proteins comprising the mitoribosome differ greatly in sequence, and sometimes in biochemical properties, which prevents easy recognition by sequence homology. This gene encodes a 39S subunit protein. A pseudogene corresponding to this gene is found at 8q21.11. [provided by RefSeq]
Molecular Mass	55.11 kDa
AA Sequence	MAAPVVTAPGRALLRAGAGRLLRGGVQELLRPRHEGNAPDLACNFSLSQNRGTVIV ERWWKVPLAGEGRKPRLHRRHRVYKLVEDTKHRPKENLELILTQSVENGVVRGDLV SVKKSLLGRNLLLPQGLAVYASPENKKLFEEKLLRQEGKLEKIQTKAGEATVKFLKS CRLEVGMKNNVKWELNPEIVARHFFKNLGVVAPHTLKLPEEPITRWGEYWCEVTV

 Tel: 1-631-559-9269 1-516-512-3133

 Email: info@creative-biomart.com  Fax: 1-631-938-8127

 45-1 Ramsey Road, Shirley, NY 11967, USA

NGLDTVRVPMSVVNFEKPKTKRYKYWLAQQAAMAPTSPQI

Applications

Enzyme-linked Immunoabsorbent Assay
 Western Blot (Recombinant protein)
 Antibody Production
 Protein Array

Notes

Best use within three months from the date of receipt of this protein.

Storage

Store at -80 centigrade. Aliquot to avoid repeated freezing and thawing.

Storage Buffer

50 mM Tris-HCl, 10 mM reduced Glutathione, pH=8.0 in the elution buffer.

GENE INFORMATION

Gene Name

MRPL9 mitochondrial ribosomal protein L9 [Homo sapiens]

Official Symbol

MRPL9

Synonyms

L9mt; MRPL9; mitochondrial ribosomal protein L9

Gene ID

65005

mRNA Refseq

NM_031420

Protein Refseq

NP_113608

MIM

611824

UniProt ID

Q9BYD2

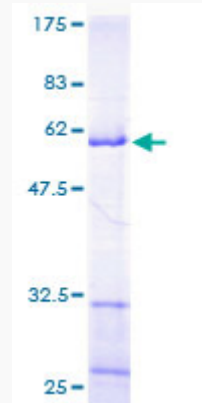
 Tel: 1-631-559-9269 1-516-512-3133

 Email: info@creative-biomart.com  Fax: 1-631-938-8127

 45-1 Ramsey Road, Shirley, NY 11967, USA

Quality Control

Testing:



12.5% SDS-PAGE Stained with Coomassie Blue.

 Tel: 1-631-559-9269 1-516-512-3133

 Email: info@creative-biomart.com  Fax: 1-631-938-8127

 45-1 Ramsey Road, Shirley, NY 11967, USA