

Recombinant Human MRPS16 Protein, GST-tagged

Cat. No. MRPS16-5604H Lot. No. (See product label)

SPECIFICATION

Product Overview	Human MRPS16 full-length ORF (AAH21106, 1 a.a. - 137 a.a.) recombinant protein with GST-tag at N-terminal.
Species	Human
Source	Wheat Germ
Description	<p>Mammalian mitochondrial ribosomal proteins are encoded by nuclear genes and help in protein synthesis within the mitochondrion. Mitochondrial ribosomes (mitoribosomes) consist of a small 28S subunit and a large 39S subunit. They have an estimated 75% protein to rRNA composition compared to prokaryotic ribosomes, where this ratio is reversed. Another difference between mammalian mitoribosomes and prokaryotic ribosomes is that the latter contain a 5S rRNA. Among different species, the proteins comprising the mitoribosome differ greatly in sequence, and sometimes in biochemical properties, which prevents easy recognition by sequence homology. This gene encodes a 28S subunit protein that belongs to the ribosomal protein S16P family. The encoded protein is one of the most highly conserved ribosomal proteins between mammalian and yeast mitochondria. Three pseudogenes (located at 8q21.3, 20q13.32, 22q12-q13.1) for this gene have been described. [provided by RefSeq]</p>
Molecular Mass	40.81 kDa
AA Sequence	MVHLTLLCKAYRGGHLTIRLALGGCTNRPFYRIVA AHNKCP RDGRFVEQLGSYDPL

 Tel: 1-631-559-9269 1-516-512-3133

 Email: info@creative-biomart.com  Fax: 1-631-938-8127

 45-1 Ramsey Road, Shirley, NY 11967, USA

PNSHGEKLVALNLDRIIRHWIGCGAHLSPMEKLLGLAGFFPLHPMMITNAERLRRKR
AREVLLASQKTDAEATDTEATET

Applications
Enzyme-linked Immunoabsorbent Assay
Western Blot (Recombinant protein)
Antibody Production
Protein Array

Notes
Best use within three months from the date of receipt of this protein.

Storage
Store at -80 centigrade. Aliquot to avoid repeated freezing and thawing.

Storage Buffer
50 mM Tris-HCl, 10 mM reduced Glutathione, pH=8.0 in the elution buffer.

GENE INFORMATION

Gene Name
MRPS16 mitochondrial ribosomal protein S16 [Homo sapiens (human)]

Official Symbol
MRPS16

Synonyms
MRPS16; mitochondrial ribosomal protein S16; COXPD2; RPMS16; CGI-132; MRP-S16; 28S ribosomal protein S16, mitochondrial; S16mt; mitochondrial small ribosomal subunit protein bS16m

Gene ID
51021

mRNA Refseq
NM_016065

Protein Refseq
NP_057149

MIM
609204

 Tel: 1-631-559-9269 1-516-512-3133

 Email: info@creative-biomart.com  Fax: 1-631-938-8127

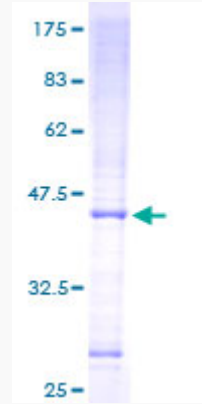
 45-1 Ramsey Road, Shirley, NY 11967, USA

UniProt ID

Q9Y3D3

Quality Control

Testing:



12.5% SDS-PAGE Stained with Coomassie Blue.

 Tel: 1-631-559-9269 1-516-512-3133

 Email: info@creative-biomart.com  Fax: 1-631-938-8127

 45-1 Ramsey Road, Shirley, NY 11967, USA