

Recombinant Human MRPS16 Protein, Myc/DDK-tagged, C13 and N15-labeled

Cat. No. MRPS16-5718H **Lot. No.** (See product label)

SPECIFICATION

Product Overview	MRPS16 MS Standard C13 and N15-labeled recombinant protein (NP_057149) with a C-terminal MYC/DDK tag, was expressed in HEK293 cells.
Species	Human
Source	HEK293
Description	Mammalian mitochondrial ribosomal proteins are encoded by nuclear genes and help in protein synthesis within the mitochondrion. Mitochondrial ribosomes (mitoribosomes) consist of a small 28S subunit and a large 39S subunit. They have an estimated 75% protein to rRNA composition compared to prokaryotic ribosomes, where this ratio is reversed. Another difference between mammalian mitoribosomes and prokaryotic ribosomes is that the latter contain a 5S rRNA. Among different species, the proteins comprising the mitoribosome differ greatly in sequence, and sometimes in biochemical properties, which prevents easy recognition by sequence homology. This gene encodes a 28S subunit protein that belongs to the ribosomal protein S16P family. The encoded protein is one of the most highly conserved ribosomal proteins between mammalian and yeast mitochondria. Three pseudogenes (located at 8q21.3, 20q13.32, 22q12-q13.1) for this gene have been described.
Molecular Mass	15.3 kDa
AA Sequence	MVHLTTLCKAYRGGHLTIRLALGGCTNRPFYRIVA AHNKCPRDGRFVEQLGSYDPL

 Tel: 1-631-559-9269 1-516-512-3133

 Email: info@creative-biomart.com  Fax: 1-631-938-8127

 45-1 Ramsey Road, Shirley, NY 11967, USA

PNSHGKLVALNLDRIIRHWIGCGAHLSPMEKLLGLAGFFPLHPMMITNAERLRRKR
AREVLLASQKTDAEATDTEATETTRTRPLEQKLISEEDLAANDILDYKDDDDKV

Purity > 80% as determined by SDS-PAGE and Coomassie blue staining

Stability Stable for 3 months from receipt of products under proper storage and handling conditions.

Storage Store at -80 centigrade. Avoid repeated freeze-thaw cycles.

Concentration 50 µg/mL as determined by BCA

Storage Buffer 100 mM glycine, 25 mM Tris-HCl, pH 7.3.

GENE INFORMATION

Gene Name [MRPS16 mitochondrial ribosomal protein S16 \[Homo sapiens \(human\) \]](#)

Official Symbol [MRPS16](#)

Synonyms MRPS16; mitochondrial ribosomal protein S16; COXPD2; RPMS16; CGI-132; MRP-S16; 28S ribosomal protein S16, mitochondrial; S16mt; mitochondrial small ribosomal subunit protein bS16m

Gene ID [51021](#)

mRNA Refseq [NM_016065](#)

Protein Refseq [NP_057149](#)

MIM [609204](#)

 Tel: 1-631-559-9269 1-516-512-3133

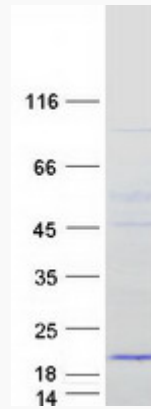
 Email: info@creative-biomart.com  Fax: 1-631-938-8127

 45-1 Ramsey Road, Shirley, NY 11967, USA

UniProt ID

Q9Y3D3

SDS-PAGE



 Tel: 1-631-559-9269 1-516-512-3133

 Email: info@creative-biomart.com  Fax: 1-631-938-8127

 45-1 Ramsey Road, Shirley, NY 11967, USA