

Recombinant Human MRPS24 Protein, GST-tagged

Cat. No. MRPS24-5613H Lot. No. (See product label)

SPECIFICATION

Product Overview	Human MRPS24 full-length ORF (NP_114403.1, 1 a.a. - 167 a.a.) recombinant protein with GST-tag at N-terminal.
Species	Human
Source	Wheat Germ
Description	Mammalian mitochondrial ribosomal proteins are encoded by nuclear genes and help in protein synthesis within the mitochondrion. Mitochondrial ribosomes (mitoribosomes) consist of a small 28S subunit and a large 39S subunit. They have an estimated 75% protein to rRNA composition compared to prokaryotic ribosomes, where this ratio is reversed. Another difference between mammalian mitoribosomes and prokaryotic ribosomes is that the latter contain a 5S rRNA. Among different species, the proteins comprising the mitoribosome differ greatly in sequence, and sometimes in biochemical properties, which prevents easy recognition by sequence homology. This gene encodes a 28S subunit protein. A pseudogene corresponding to this gene is found on chromosome 11. [provided by RefSeq]
Molecular Mass	45.4 kDa
AA Sequence	MAASVCSGLLGPRVLSWSRELPCAWRALHTSPVCAKNRAARVRVSKGDKPVTYEE AHAPHYIAHRKGWLSLHTGNLDGEDHAAERTVEDVFLRKFMWGTFFPGCLADQLVLK RRGNQLEICAVVLRQLSPHKYYFLVGYSETLLSYFYKCPVRLHLQTVPSKVVKYL
Applications	Enzyme-linked Immunoabsorbent Assay

 Tel: 1-631-559-9269 1-516-512-3133

 Email: info@creative-biomart.com  Fax: 1-631-938-8127

 45-1 Ramsey Road, Shirley, NY 11967, USA

Western Blot (Recombinant protein)
 Antibody Production
 Protein Array

Notes Best use within three months from the date of receipt of this protein.

Storage Store at -80 centigrade. Aliquot to avoid repeated freezing and thawing.

Storage Buffer 50 mM Tris-HCl, 10 mM reduced Glutathione, pH=8.0 in the elution buffer.

GENE INFORMATION

Gene Name [MRPS24 mitochondrial ribosomal protein S24 \[Homo sapiens \]](#)

Official Symbol [MRPS24](#)

Synonyms MRPS24; mitochondrial ribosomal protein S24; 28S ribosomal protein S24, mitochondrial; HSPC335; MRP S24; mitochondrial 28S ribosomal protein S24; S24mt; bMRP47; MRP-S24; bMRP-47;

Gene ID [64951](#)

mRNA Refseq [NM_032014](#)

Protein Refseq [NP_114403](#)

MIM [611986](#)

UniProt ID [Q96EL2](#)

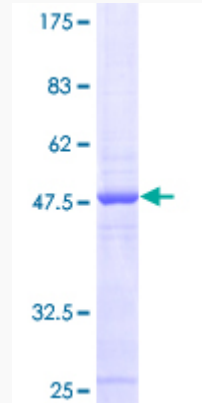
 Tel: 1-631-559-9269 1-516-512-3133

 Email: info@creative-biomart.com  Fax: 1-631-938-8127

 45-1 Ramsey Road, Shirley, NY 11967, USA

Quality Control

Testing:



12.5% SDS-PAGE Stained with Coomassie Blue.

 Tel: 1-631-559-9269 1-516-512-3133

 Email: info@creative-biomart.com  Fax: 1-631-938-8127

 45-1 Ramsey Road, Shirley, NY 11967, USA