

Recombinant Full Length Human MRPS25 Protein, C-Flag-tagged

Cat. No. MRPS25-1047HFL Lot. No. (See product label)

SPECIFICATION

Product Overview	Recombinant Full Length Human MRPS25 Protein, fused to Flag-tag at C-terminus, was expressed in Mammalian cells.
Species	Human
Source	Mammalian Cells
Description	Mammalian mitochondrial ribosomal proteins are encoded by nuclear genes and help in protein synthesis within the mitochondrion. Mitochondrial ribosomes (mitoribosomes) consist of a small 28S subunit and a large 39S subunit. They have an estimated 75% protein to rRNA composition compared to prokaryotic ribosomes, where this ratio is reversed. Another difference between mammalian mitoribosomes and prokaryotic ribosomes is that the latter contain a 5S rRNA. Among different species, the proteins comprising the mitoribosome differ greatly in sequence, and sometimes in biochemical properties, which prevents easy recognition by sequence homology. This gene encodes a 28S subunit protein. A pseudogene corresponding to this gene is found on chromosome 4. Alternative splicing results in multiple transcript variants.
Form	25 mM Tris HCl, pH 7.3, 100 mM glycine, 10% glycerol.
Molecular Mass	19.9 kDa
AA Sequence	MPMKGRFPIRRTLQYLSQGNVVFKDSVKVMTVNYNTHGELGEGARKFVFFNIPQIQ

 Tel: 1-631-559-9269 1-516-512-3133

 Email: info@creative-biomart.com  Fax: 1-631-938-8127

 45-1 Ramsey Road, Shirley, NY 11967, USA

YKNPWWQIMMFKNM TPSPFLRFYLDSGEQVLVDVETKSNKEIMEHIRKILGKNEETL
 REEEEEKKQLSHPANFGPRKYCLRECI
 CEVEGQVPCPSLVPLPKEMRGKYKAALKADAQDTRTRPLEQKLISEEDLAANDILDY
 KDDDDKV

Purity	> 80% as determined by SDS-PAGE and Coomassie blue staining.
Stability	Stable for 12 months from the date of receipt of the product under proper storage and handling conditions. Avoid repeated freeze-thaw cycles.
Storage	Store at -80 centigrade.
Concentration	>50 ug/mL as determined by microplate BCA method.
Preparation	Recombinant protein was captured through anti-DDK affinity column followed by conventional chromatography steps.
Full Length	Full L.

GENE INFORMATION

Gene Name	MRPS25 mitochondrial ribosomal protein S25 [Homo sapiens (human)]
Official Symbol	MRPS25
Synonyms	RPMS25; COXPD50; MRP-S25
Gene ID	64432
mRNA Refseq	NM_022497.5

 Tel: 1-631-559-9269 1-516-512-3133

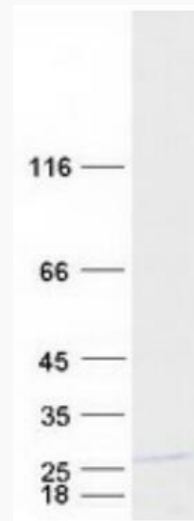
 Email: info@creative-biomart.com  Fax: 1-631-938-8127

 45-1 Ramsey Road, Shirley, NY 11967, USA

Protein Refseq NP_071942.1

MIM 611987

UniProt ID P82663



Coomassie blue staining of purified MRPS25 protein.

 Tel: 1-631-559-9269 1-516-512-3133

 Email: info@creative-biomart.com  Fax: 1-631-938-8127

 45-1 Ramsey Road, Shirley, NY 11967, USA