

Recombinant Human MRPS25 Protein, Myc/DDK-tagged, C13 and N15-labeled

Cat. No. MRPS25-5894H **Lot. No.** (See product label)

SPECIFICATION

Product Overview	MRPS25 MS Standard C13 and N15-labeled recombinant protein (NP_071942) with a C-terminal MYC/DDK tag, was expressed in HEK293 cells.
Species	Human
Source	HEK293
Description	Mammalian mitochondrial ribosomal proteins are encoded by nuclear genes and help in protein synthesis within the mitochondrion. Mitochondrial ribosomes (mitoribosomes) consist of a small 28S subunit and a large 39S subunit. They have an estimated 75% protein to rRNA composition compared to prokaryotic ribosomes, where this ratio is reversed. Another difference between mammalian mitoribosomes and prokaryotic ribosomes is that the latter contain a 5S rRNA. Among different species, the proteins comprising the mitoribosome differ greatly in sequence, and sometimes in biochemical properties, which prevents easy recognition by sequence homology. This gene encodes a 28S subunit protein. A pseudogene corresponding to this gene is found on chromosome 4. Alternative splicing results in multiple transcript variants.
Molecular Mass	20.1 kDa
AA Sequence	MPMKGRFPIRRTLQYLSQGNVVFKDSVKVMTVNYNTHGELGEGARKFVFFNIPQIQ YKNPWVQIMMFKNMTPSPFLRFYLDSEQLVDVETKSNKEIMEHIRKILGKNEETL

 Tel: 1-631-559-9269 1-516-512-3133

 Email: info@creative-biomart.com  Fax: 1-631-938-8127

 45-1 Ramsey Road, Shirley, NY 11967, USA

REEEEEKKQLSHPANFGPRKYCLRECICEVEGQVPCPSLVPLPKEMRGKYKAALKA
DAQDTRTRPLEQKLISEEDLAANDILDYKDDDDKV

Purity > 80% as determined by SDS-PAGE and Coomassie blue staining

Stability Stable for 3 months from receipt of products under proper storage and handling conditions.

Storage Store at -80 centigrade. Avoid repeated freeze-thaw cycles.

Concentration 50 µg/mL as determined by BCA

Storage Buffer 100 mM glycine, 25 mM Tris-HCl, pH 7.3.

GENE INFORMATION

Gene Name [MRPS25 mitochondrial ribosomal protein S25 \[Homo sapiens \(human\) \]](#)

Official Symbol [MRPS25](#)

Synonyms MRPS25; mitochondrial ribosomal protein S25; MRP-S25;

Gene ID [64432](#)

mRNA Refseq [NM_022497](#)


Protein Refseq [NP_071942](#)

MIM [611987](#)

UniProt ID [P82663](#)

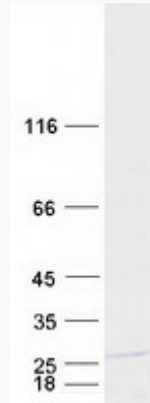
 Tel: 1-631-559-9269 1-516-512-3133

 Email: info@creative-biomart.com  Fax: 1-631-938-8127

 45-1 Ramsey Road, Shirley, NY 11967, USA



SDS-PAGE



Tel: 1-631-559-9269 1-516-512-3133

Email: info@creative-biomart.com Fax: 1-631-938-8127

45-1 Ramsey Road, Shirley, NY 11967, USA