

## Recombinant Human MRPS9 Protein, GST-tagged

Cat. No. MRPS9-5627H Lot. No. (See product label)

### SPECIFICATION

<b>Product Overview</b>	Human MRPS9 full-length ORF ( NP_872578.1, 1 a.a. - 396 a.a.) recombinant protein with GST-tag at N-terminal.
<b>Species</b>	Human
<b>Source</b>	Wheat Germ
<b>Description</b>	Mammalian mitochondrial ribosomal proteins are encoded by nuclear genes and help in protein synthesis within the mitochondrion. Mitochondrial ribosomes (mitoribosomes) consist of a small 28S subunit and a large 39S subunit. They have an estimated 75% protein to rRNA composition compared to prokaryotic ribosomes, where this ratio is reversed. Another difference between mammalian mitoribosomes and prokaryotic ribosomes is that the latter contain a 5S rRNA. Among different species, the proteins comprising the mitoribosome differ greatly in sequence, and sometimes in biochemical properties, which prevents easy recognition by sequence homology. This gene encodes a 28S subunit protein. [provided by RefSeq]
<b>Molecular Mass</b>	72.2 kDa
<b>AA Sequence</b>	MAAPCVSYGGAVSYRLLLWGRGSLARKQGLWKTAAPQLQTNVRSQILRLRHTAFVI PKKNVPTSKRETYTEDFIKKQIEEFNIGKRHLANMMGEDPETFTQEDIDRAIAYLFPS GLFEKRARPVMKHPEQIFPRQRAIQWGEDGRPFHYLFYTGKQSYYSMLMHDVYGML LNLEKHQSHLQAKSLLPEKTVTRDVIGSRWLIKEELEMLVEKLSLDLDYMQFIRLLEK LLTSQCGAAEEEFVQRFRRSVTLESKKQLIEPVQYDEQGMFAFSKSEGKRKTAKAEAI

Tel: 1-631-559-9269 1-516-512-3133

Email: [info@creative-biomart.com](mailto:info@creative-biomart.com) Fax: 1-631-938-8127

45-1 Ramsey Road, Shirley, NY 11967, USA

VYKHGSGRIKVNIGIDYQLYFPITQDREQLMFPFHFVDRLGKHDVTCTVSGGGRSAQ  
 AGAIRLAMAKALCSFVTEDEVEWMRQAGLLTTDPRVRERKKPGQEGARRKFTWKK  
 R

<b>Applications</b>	Enzyme-linked Immunoabsorbent Assay Western Blot (Recombinant protein) Antibody Production Protein Array
<b>Notes</b>	Best use within three months from the date of receipt of this protein.
<b>Storage</b>	Store at -80 centigrade. Aliquot to avoid repeated freezing and thawing.
<b>Storage Buffer</b>	50 mM Tris-HCl, 10 mM reduced Glutathione, pH=8.0 in the elution buffer.

## GENE INFORMATION

<b>Gene Name</b>	MRPS9 mitochondrial ribosomal protein S9 [ Homo sapiens ]
<b>Official Symbol</b>	MRPS9
<b>Synonyms</b>	MRPS9; mitochondrial ribosomal protein S9; 28S ribosomal protein S9, mitochondrial; 28S ribosomal protein S9; mitochondrial; MRP S9; RPMS9; S9mt; MRP-S9;
<b>Gene ID</b>	64965
<b>mRNA Refseq</b>	NM_182640
<b>Protein Refseq</b>	NP_872578
<b>MIM</b>	611975

 Tel: 1-631-559-9269 1-516-512-3133

 Email: [info@creative-biomart.com](mailto:info@creative-biomart.com)  Fax: 1-631-938-8127

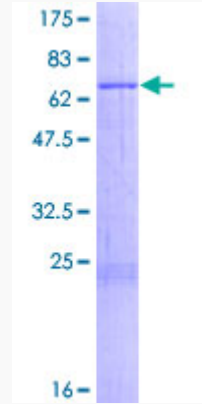
 45-1 Ramsey Road, Shirley, NY 11967, USA

UniProt ID

P82933

Quality Control

Testing:



12.5% SDS-PAGE Stained with Coomassie Blue.

 Tel: 1-631-559-9269 1-516-512-3133

 Email: [info@creative-biomart.com](mailto:info@creative-biomart.com)  Fax: 1-631-938-8127

 45-1 Ramsey Road, Shirley, NY 11967, USA