

Recombinant Human MS4A1 Full Length Transmembrane protein, His-tagged

Cat. No. MS4A1-0123H Lot. No. (See product label)

SPECIFICATION

Product Overview	Recombinant Human MS4A1 protein(P11836)(1-297aa), fused with N-terminal His tag, was expressed in in vitro E. coli expression system.
Species	Human
Source	E.coli
ProteinLength	1-297aa
Form	If the delivery form is liquid, the default storage buffer is Tris/PBS-based buffer, 5%-50% glycerol. If the delivery form is lyophilized powder, the buffer before lyophilization is Tris/PBS-based buffer, 6% Trehalose, pH 8.0.
Molecular Mass	34.6 kDa
AA Sequence	MTTPRNSVNGTFPAEPMKGPAMQSGPKPLFRRMSSLVGPTQSFFMRESKTLGAV QIMNGLFHIALGLLMIPAGIYAPICVTWYPLWGGIMYIISGSLAATEKNSRKCLVK GKMIMNSLSLFAAISGMILSIMDILNIKISHFLKMESLNFIRAHTPYINIYNCEPANPSEK NSPSTQYCYISQSLFLGILSVMLIFAFFQELVIAGIVENEWKRTCSRPKSNIVLLSAEEK KEQTIEIKEEVVGLTETSSQPKNEEDIEIPIQEEEEEEETETNFPEPPQDQESSPIENDS SP
Purity	Greater than 85% as determined by SDS-PAGE.

 Tel: 1-631-559-9269 1-516-512-3133

 Email: info@creative-biomart.com  Fax: 1-631-938-8127

 45-1 Ramsey Road, Shirley, NY 11967, USA

Storage Store at -20°C/-80°C upon receipt, aliquoting is necessary for mutiple use. Avoid repeated freeze-thaw cycles.

Reconstitution Please reconstitute protein in deionized sterile water to a concentration of 0.1-1.0 mg/mL. We recommend to add 5-50% of glycerol (final concentration) and aliquot for long-term storage at -20°C/-80°C.

GENE INFORMATION

Gene Name MS4A1 membrane-spanning 4-domains, subfamily A, member 1 [Homo sapiens]

Official Symbol MS4A1

Synonyms MS4A1; membrane-spanning 4-domains, subfamily A, member 1; CD20; B-lymphocyte antigen CD20; B1; Bp35; MS4A2; CD20 antigen; CD20 receptor; leukocyte surface antigen Leu-16; B-lymphocyte cell-surface antigen B1; S7; CVID5; LEU-16; MGC3969;

Gene ID 931

mRNA Refseq NM_021950

Protein Refseq NP_068769

MIM 112210

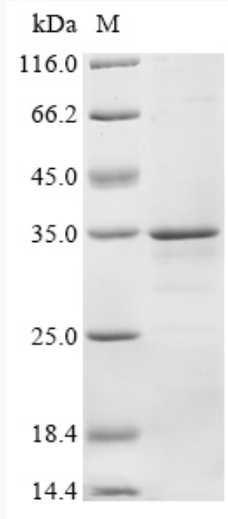
UniProt ID P11836

 Tel: 1-631-559-9269 1-516-512-3133

 Email: info@creative-biomart.com  Fax: 1-631-938-8127

 45-1 Ramsey Road, Shirley, NY 11967, USA

SDS-PAGE



 Tel: 1-631-559-9269 1-516-512-3133

 Email: info@creative-biomart.com  Fax: 1-631-938-8127

 45-1 Ramsey Road, Shirley, NY 11967, USA