

## Recombinant Human MS4A1 Protein (Ile143-Ser188), N-His and N-Trx tagged

Cat. No. MS4A1-0767H Lot. No. (See product label)

### SPECIFICATION

|                         |   |
|-------------------------|---|
| <b>Product Overview</b> | Recombinant Human CD20/MS4A1 (Ile143-Ser188) fused with the N-His & N-Trx tag was expressed in E. coli.   |
| <b>Species</b>          | Human   |
| <b>Source</b>           | E.coli  |
| <b>ProteinLength</b>    | Ile143-Ser188   |
| <b>Form</b>             | Lyophilized powder/frozen liquid  |
| <b>Molecular Mass</b>   | 19.58 kDa   |
| <b>Purity</b>           | >90% as determined by SDS-PAGE.   |
| <b>Notes</b>            | For research use only.  |
| <b>Storage</b>          | Use a manual defrost freezer and avoid repeated freeze thaw cycles.<br>Store at 2 to 8 centigrade for one week.<br>Store at -20 to -80 centigrade for twelve months from the date of receipt. |
| <b>Storage Buffer</b>   | 0.01M PBS, pH 7.4, 0.02% NLS  |
| <b>Reconstitution</b>   | Reconstitute in sterile water for a stock solution.   |

 Tel: 1-631-559-9269 1-516-512-3133

 Email: [info@creative-biomart.com](mailto:info@creative-biomart.com)  Fax: 1-631-938-8127

 45-1 Ramsey Road, Shirley, NY 11967, USA

**Shipping** They are shipped out with dry ice/blue ice unless customers require otherwise.

## GENE INFORMATION

**Gene Name** MS4A1 membrane-spanning 4-domains, subfamily A, member 1 [ Homo sapiens (human) ]

**Official Symbol** MS4A1

**Synonyms** MS4A1; membrane-spanning 4-domains, subfamily A, member 1; CD20; B-lymphocyte antigen CD20; B1; Bp35; MS4A2; CD20 antigen; CD20 receptor; leukocyte surface antigen Leu-16; B-lymphocyte cell-surface antigen B1; S7; CVID5; LEU-16; MGC3969;

**Gene ID** 931

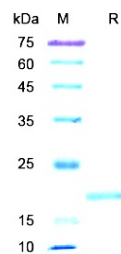
**mRNA Refseq** NM\_021950

**Protein Refseq** NP\_068769

**MIM** 112210

**UniProt ID** P11836

### SDS-PAGE



Tel: 1-631-559-9269 1-516-512-3133

Email: [info@creative-biomart.com](mailto:info@creative-biomart.com) Fax: 1-631-938-8127

45-1 Ramsey Road, Shirley, NY 11967, USA