

Recombinant Human MS4A1, GST-tagged

Cat. No. MS4A1-10H Lot. No. (See product label)

SPECIFICATION

Product Overview Recombinant Human MS4A1 encoding human MS4A1 full-length ORF (1 a.a. - 297 a.a.) produced in in vitro wheat germ expression system, was fused a GST-tag at N-terminal.

Species Human

Source Wheat Germ

Description This gene encodes a member of the membrane-spanning 4A gene family. Members of this nascent protein family are characterized by common structural features and similar intron/exon splice boundaries and display unique expression patterns among hematopoietic cells and nonlymphoid tissues. This gene encodes a B-lymphocyte surface molecule which plays a role in the development and differentiation of B-cells into plasma cells. This family member is localized to 11q12, among a cluster of family members. Alternative splicing of this gene results in two transcript variants which encode the same protein.

Sequence

```

MTTPRNSVNGTFPAEPMKGPIAMQSGPKPLFRRMSSLVGPTQSFFMRES KTLGAV
QIMNGLFHIALGGLLMIPAGIYAPICVTWYPLWGGIMYIISGSLAA TEKNSRKCLVK
GKMIMNSLSLFAAISGMILSIMDILNIKISHFLKMESLNFIRA HTPYINIYNCEPANPSEK
NSPSTQYCYSIQSLFLGILSVMLIFAFFQELVIAGI VENEWKRTCSRPKSNIVLLSAEE
KKEQTIEIKEEVVGLTETSSQPKNEEDI EIIPIQEEEEEEETETNFPEPPQDQESSPIEN
DSSP
    
```

 Tel: 1-631-559-9269 1-516-512-3133

 Email: info@creative-biomart.com  Fax: 1-631-938-8127

 45-1 Ramsey Road, Shirley, NY 11967, USA

Purification	Glutathione Sepharose 4 Fast Flow
MolecularWeight	58.41 kDa
Applications	ELISA; WB
Storage Buffer	50 mM Tris-HCl, 10 mM reduced Glutathione, pH8.0 in the elution buffer.
Storage	Store at -80°C. Aliquot to avoid repeated freezing and thawing.

GENE INFORMATION

Gene Name	MS4A1 membrane-spanning 4-domains, subfamily A, member 1 [Homo sapiens]
Official Symbol	MS4A1
Synonyms	MS4A1; membrane-spanning 4-domains, subfamily A, member 1; B1; S7; Bp35; CD20; CVID5; MS4A2; LEU-16; B-lymphocyte antigen CD20; CD20 antigen; CD20 receptor; leukocyte surface antigen Leu-16; B-lymphocyte cell-surface antigen B1; MGC3969; OTTHUMP00000236377; OTTHUMP00000236378
Gene ID	931
mRNA Refseq	NM_021950
Protein Refseq	NP_068769
MIM	118910
UniProt ID	P11836

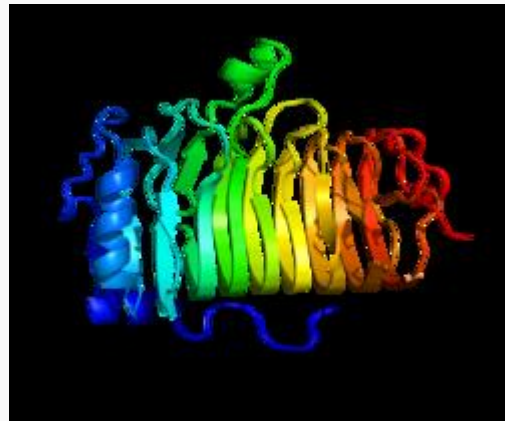
 Tel: 1-631-559-9269 1-516-512-3133

 Email: info@creative-biomart.com  Fax: 1-631-938-8127

 45-1 Ramsey Road, Shirley, NY 11967, USA

Chromosome Location	11q12
Pathway	Hematopoietic cell lineage
Function	epidermal growth factor receptor binding

Rendering based on
PDB 1S8B.



 Tel: 1-631-559-9269 1-516-512-3133

 Email: info@creative-biomart.com  Fax: 1-631-938-8127

 45-1 Ramsey Road, Shirley, NY 11967, USA