

Recombinant Full Length Human MS4A1 Protein, C-Flag-tagged

Cat. No. MS4A1-118HFL **Lot. No.** (See product label)

SPECIFICATION

Product Overview	Recombinant Full Length Human MS4A1 Protein, fused to Flag-tag at C-terminus, was expressed in Mammalian cells.
Species	Human
Source	Mammalian Cells
Description	This gene encodes a member of the membrane-spanning 4A gene family. Members of this nascent protein family are characterized by common structural features and similar intron/exon splice boundaries and display unique expression patterns among hematopoietic cells and nonlymphoid tissues. This gene encodes a B-lymphocyte surface molecule which plays a role in the development and differentiation of B-cells into plasma cells. This family member is localized to 11q12, among a cluster of family members. Alternative splicing of this gene results in two transcript variants which encode the same protein.
Form	25 mM Tris HCl, pH 7.3, 100 mM glycine, 10% glycerol.
Molecular Mass	32.9 kDa
AA Sequence	MTTPRNSVNGTFPAEPMKGP IAMQSGPKPLFRRMSSLVGPTQSFFMRESKTLGAV QIMNGLFHIALGGLL MIPAGIYAPICVTVWYPLWGGIMYIISGSLLAATEKNSRKCLVK GKMIMNSLSLFAAISGMILSIMDILN IKISHFLKMESLNFIRAHTPYINIYNCEPANPSEK NSPSTQYCYSIQSLFLGILSVMLIFAFFQELVIAG IVENEWKRTCSRPKSNIVLLSAEE

 Tel: 1-631-559-9269 1-516-512-3133

 Email: info@creative-biomart.com  Fax: 1-631-938-8127

 45-1 Ramsey Road, Shirley, NY 11967, USA

KKEQTIEIKEEVVGLTETSSQPKNEEDIEIPIQEEEEETETNFP
EPPQDQESSPIENDSSPTRTRPLEQKLISEEDLAANDILDYKDDDDKV

Purity	> 80% as determined by SDS-PAGE and Coomassie blue staining.
Stability	Stable for 12 months from the date of receipt of the product under proper storage and handling conditions. Avoid repeated freeze-thaw cycles.
Storage	Store at -80 centigrade.
Concentration	>50 ug/mL as determined by microplate BCA method.
Preparation	Recombinant protein was captured through anti-DDK affinity column followed by conventional chromatography steps.
Protein Families	Druggable Genome, Transmembrane
Protein Pathways	Hematopoietic cell lineage
Full Length	Full L.

GENE INFORMATION

Gene Name	MS4A1 membrane spanning 4-domains A1 [Homo sapiens (human)]
Official Symbol	MS4A1
Synonyms	B1; S7; Bp35; CD20; FMC7; CVID5; LEU-16
Gene ID	931

 Tel: 1-631-559-9269 1-516-512-3133

 Email: info@creative-biomart.com  Fax: 1-631-938-8127

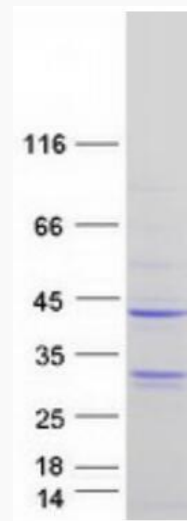
 45-1 Ramsey Road, Shirley, NY 11967, USA

mRNA Refseq [NM_021950.4](#)

Protein Refseq [NP_068769.2](#)

MIM [112210](#)

UniProt ID [P11836](#)



Coomassie blue staining of purified MS4A1 protein.

 Tel: 1-631-559-9269 1-516-512-3133

 Email: info@creative-biomart.com  Fax: 1-631-938-8127

 45-1 Ramsey Road, Shirley, NY 11967, USA