

Recombinant Human MS4A1

Cat. No. MS4A1-11H **Lot. No.** (See product label)

SPECIFICATION

Product Overview

Recombinant Human MS4A1 encoding human MS4A1 full-length ORF produced in in vitro wheat germ expression system with proprietary liposome technology.

Species

Human

Source

Wheat Germ

Description

This gene encodes a member of the membrane-spanning 4A gene family. Members of this nascent protein family are characterized by common structural features and similar intron/exon splice boundaries and display unique expression patterns among hematopoietic cells and nonlymphoid tissues. This gene encodes a B-lymphocyte surface molecule which plays a role in the development and differentiation of B-cells into plasma cells. This family member is localized to 11q12, among a cluster of family members. Alternative splicing of this gene results in two transcript variants which encode the same protein.

Sequence

MTTPRNSVNGTFPAEPMKGPAMQSGPKPLFRMSSLVGPTQSFFMRES KTLGAV
 QIMNGLFHIALGGLLMIPAGIYAPICVTWYPLWGGIMYIISGSLAA TEKNSRKCLVK
 GKMIMNSLSLFAAISGMILSIMDILNIKISHFLKMESLNFIRA HTPYINIYNCEPANPSEK
 NSPSTQYCYSIQSLFLGILSVMLIFAFFQELVIAGI VENEWKRTCSRPKSNIVLLSAEE
 KKEQTIEIKEEVVGLTETSSQPKNEEDI EIIPIQEEEEEEETETNFPEPPQDQESSPIEN
 DSSP

MolecularWeight

33.1kDa

 Tel: 1-631-559-9269 1-516-512-3133

 Email: info@creative-biomart.com  Fax: 1-631-938-8127

 45-1 Ramsey Road, Shirley, NY 11967, USA

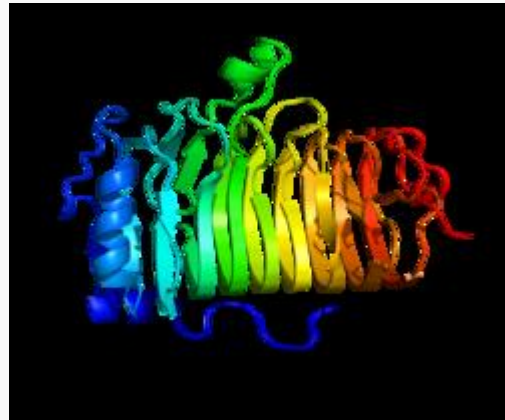
Storage Buffer	25 mM Tris-HCl of pH8.0 containing 2% glycerol.
Storage	Store at -80°C. Aliquot to avoid repeated freezing and thawing.
GENE INFORMATION	
Gene Name	MS4A1 membrane-spanning 4-domains, subfamily A, member 1 [Homo sapiens]
Official Symbol	MS4A1
Synonyms	MS4A1; membrane-spanning 4-domains, subfamily A, member 1; B1; S7; Bp35; CD20; CVID5; MS4A2; LEU-16; B-lymphocyte antigen CD20; CD20 antigen; CD20 receptor; leukocyte surface antigen Leu-16; B-lymphocyte cell-surface antigen B1; MGC3969; OTTHUMP00000236377; OTTHUMP00000236378
Gene ID	931
mRNA Refseq	NM_021950
Protein Refseq	NP_068769
MIM	118910
UniProt ID	P11836
Chromosome Location	11q12
Pathway	Hematopoietic cell lineage
Function	epidermal growth factor receptor binding

 Tel: 1-631-559-9269 1-516-512-3133

 Email: info@creative-biomart.com  Fax: 1-631-938-8127

 45-1 Ramsey Road, Shirley, NY 11967, USA

Rendering based on
PDB 1S8B.



 Tel: 1-631-559-9269 1-516-512-3133

 Email: info@creative-biomart.com  Fax: 1-631-938-8127

 45-1 Ramsey Road, Shirley, NY 11967, USA