

Active Recombinant Human MS4A1 protein, Flag-tagged

Cat. No. MS4A1-151H Lot. No. (See product label)

SPECIFICATION

Product Overview	Recombinant Human B-lymphocyte antigen CD20 is produced by our Mammalian expression system and the target gene encoding Met1-Pro297 is expressed with a Flag tag at the C-terminus.
Species	Human
Source	HEK293
ProteinLength	Met1-Pro297
Form	Supplied as a 0.2 µm filtered solution of 50mM HEPES, 150mM NaCl, 0.06% DDM, 0.012% CHS, 10% Glycerol, pH 7.4.
Bio-activity	Immobilized Anti-Human CD20 mAb at 2µg/ml (100 µl/well) can bind Human CD20-Flag. The ED50 of Human CD20-Flag is 0.303 µg/ml.
Molecular Mass	34.3 Kda
Endotoxin	Less than 0.1 ng/g (1 EU/g) as determined by LAL test.
Purity	Greater than 70% as determined by reducing SDS-PAGE.
Storage	Store at ≤-70°C, stable for 6 months after receipt. Store at ≤-70°C, stable for 3 months under sterile conditions after opening. Please minimize freeze-thaw cycles.

 Tel: 1-631-559-9269 1-516-512-3133

 Email: info@creative-biomart.com  Fax: 1-631-938-8127

 45-1 Ramsey Road, Shirley, NY 11967, USA

Reconstitution

It is recommended to reconstitute the lyophilized powder in sterile water to 100-200 ug/ml, and further dilute with other solvents. The dissolved protein can be stored at 4°C for 2-7 days and should be used up as soon as possible. If not in use for a short time, please store at -20°C.

GENE INFORMATION

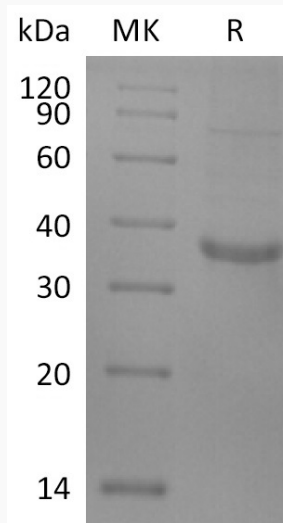
Gene Name	MS4A1 membrane-spanning 4-domains, subfamily A, member 1 [Homo sapiens]
Official Symbol	MS4A1
Synonyms	MS4A1; membrane-spanning 4-domains, subfamily A, member 1; CD20; B-lymphocyte antigen CD20; B1; Bp35; MS4A2; CD20 antigen; CD20 receptor; leukocyte surface antigen Leu-16; B-lymphocyte cell-surface antigen B1; S7; CVID5; LEU-16; MGC3969;
Gene ID	931
mRNA Refseq	NM_021950
Protein Refseq	NP_068769
MIM	112210
UniProt ID	P11836

 Tel: 1-631-559-9269 1-516-512-3133

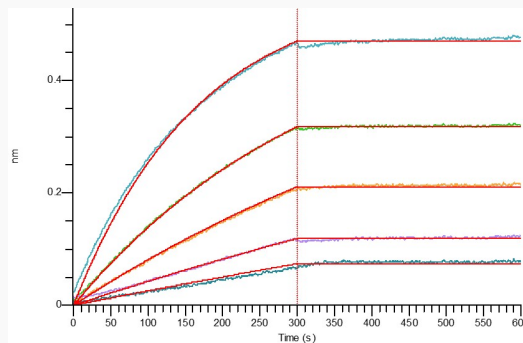
 Email: info@creative-biomart.com  Fax: 1-631-938-8127

 45-1 Ramsey Road, Shirley, NY 11967, USA

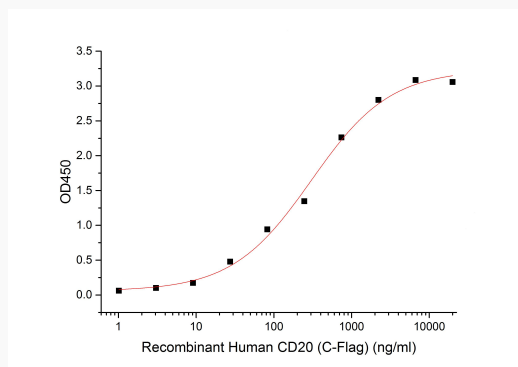
SDS-PAGE



Bioactivity



Bioactivity



 Tel: 1-631-559-9269 1-516-512-3133

 Email: info@creative-biomart.com  Fax: 1-631-938-8127

 45-1 Ramsey Road, Shirley, NY 11967, USA