

Recombinant Human MS4A1 Protein, Myc/DDK-tagged, C13 and N15-labeled

Cat. No. MS4A1-1649H Lot. No. (See product label)

SPECIFICATION

Product Overview	MS4A1 MS Standard C13 and N15-labeled recombinant protein (NP_068769) with a C-terminal MYC/DDK tag, was expressed in HEK293 cells.
Species	Human
Source	HEK293
Description	This gene encodes a member of the membrane-spanning 4A gene family. Members of this nascent protein family are characterized by common structural features and similar intron/exon splice boundaries and display unique expression patterns among hematopoietic cells and nonlymphoid tissues. This gene encodes a B-lymphocyte surface molecule which plays a role in the development and differentiation of B-cells into plasma cells. This family member is localized to 11q12, among a cluster of family members. Alternative splicing of this gene results in two transcript variants which encode the same protein.
Molecular Mass	33.1 kDa
AA Sequence	MTTPRNSVNGTFPAEPMKGPAMQSGPKPLFRMSSLVGPTQSFFMRESKTLGAV QIMNGLFHIALGGLLMIPAGIYAPICVTWYPLWGGIMYIISGSLAATEKNSRKCLVK GKMIMNSLSLFAAISGMILSIMDILNIKISHFLKMESLNFIRAHTPYINIYNCEPANPSEK NSPSTQYCYSIQSLFLGILSVMLIFAFFQELVIAGIVENEWKRTCSPKSNIVLLSAEEK KEQTIEIKEEVGLTETSSQPKNEEDIEIPIQEEEEETETNFPEPPQDQESSPIENDS

 Tel: 1-631-559-9269 1-516-512-3133

 Email: info@creative-biomart.com  Fax: 1-631-938-8127

 45-1 Ramsey Road, Shirley, NY 11967, USA

SPTRTRPLEQKLISEEDLAANDILDYKDDDDKV

Purity > 80% as determined by SDS-PAGE and Coomassie blue staining

Stability Stable for 3 months from receipt of products under proper storage and handling conditions.

Storage Store at -80 centigrade. Avoid repeated freeze-thaw cycles.

Concentration 50 µg/mL as determined by BCA

Storage Buffer 100 mM glycine, 25 mM Tris-HCl, pH 7.3.

GENE INFORMATION

Gene Name [MS4A1 membrane spanning 4-domains A1 \[Homo sapiens \(human\) \]](#)

Official Symbol [MS4A1](#)

Synonyms MS4A1; membrane-spanning 4-domains, subfamily A, member 1; CD20; B-lymphocyte antigen CD20; B1; Bp35; MS4A2; CD20 antigen; CD20 receptor; leukocyte surface antigen Leu-16; B-lymphocyte cell-surface antigen B1; S7; CVID5; LEU-16; MGC3969;

Gene ID [931](#)

mRNA Refseq [NM_021950](#)

Protein Refseq [NP_068769](#)

MIM [112210](#)

 Tel: 1-631-559-9269 1-516-512-3133

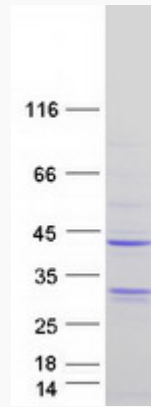
 Email: info@creative-biomart.com  Fax: 1-631-938-8127

 45-1 Ramsey Road, Shirley, NY 11967, USA

UniProt ID

P11836

SDS-PAGE



 Tel: 1-631-559-9269 1-516-512-3133

 Email: info@creative-biomart.com  Fax: 1-631-938-8127

 45-1 Ramsey Road, Shirley, NY 11967, USA