

Recombinant Human MS4A1 protein, His-tagged

Cat. No. MS4A1-16H Lot. No. (See product label)

SPECIFICATION

Product Overview	Recombinant Human MS4A1 protein(NP_068769.2) (Ile141-Ser188) was expressed in E. coli with a polyhistidine tag at the C-terminus.
Species	Human
Source	E. coli
ProteinLength	141-188 aa
Form	Lyophilized from sterile 50 mM Tris, 150 mM NaCl, 1 mM EDTA, pH 8.0.
Molecular Mass	The recombinant human MS4A1 consists 218 amino acids and predicts a molecular mass of 23.9 kDa.
Purity	> 80 % as determined by SDS-PAGE
Storage	Store it under sterile conditions at -20°C to -80°C upon receiving. Recommend to aliquot the protein into smaller quantities for optimal storage. Avoid repeated freeze-thaw cycles.
Reconstitution	It is recommended that sterile water be added to the vial to prepare a stock solution of 0.2 ug/ul. Centrifuge the vial at 4°C before opening to recover the entire contents.
protein Refseq-Weblink	http://www.ncbi.nlm.nih.gov/protein/NP_068769.2

 Tel: 1-631-559-9269 1-516-512-3133

 Email: info@creative-biomart.com  Fax: 1-631-938-8127

 45-1 Ramsey Road, Shirley, NY 11967, USA

Unit ID	P11836
----------------	--------

Unit ID-Weblink	http://www.uniprot.org/uniprot/P11836
------------------------	---

GENE INFORMATION

Gene Name	MS4A1 membrane-spanning 4-domains, subfamily A, member 1 [Homo sapiens]
------------------	---

Official Symbol	MS4A1
------------------------	-------

Synonyms	MS4A1; membrane-spanning 4-domains, subfamily A, member 1; CD20; B-lymphocyte antigen CD20; B1; Bp35; MS4A2; CD20 antigen; CD20 receptor; leukocyte surface antigen Leu-16; B-lymphocyte cell-surface antigen B1; S7; CVID5; LEU-16; MGC3969;
-----------------	---

Gene ID	931
----------------	-----

mRNA Refseq	NM_021950
--------------------	-----------

protein Refseq	NP_068769
-----------------------	-----------

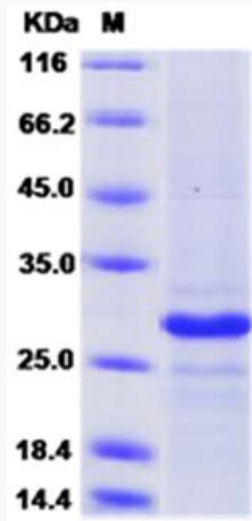
MIM	112210
------------	--------

 Tel: 1-631-559-9269 1-516-512-3133

 Email: info@creative-biomart.com  Fax: 1-631-938-8127

 45-1 Ramsey Road, Shirley, NY 11967, USA

SDS-PAGE



 Tel: 1-631-559-9269 1-516-512-3133

 Email: info@creative-biomart.com  Fax: 1-631-938-8127

 45-1 Ramsey Road, Shirley, NY 11967, USA