

Recombinant Dog MS4A1 Full Length Transmembrane protein, His-tagged

Cat. No. MS4A1-1934D Lot. No. (See product label)

SPECIFICATION

Product Overview	Recombinant Dog MS4A1 protein(Q3C2E2)(1-297aa), fused with N-terminal His tag, was expressed in in vitro E. coli expression system.
Species	Dog
Source	E.coli
ProteinLength	1-297aa
Form	If the delivery form is liquid, the default storage buffer is Tris/PBS-based buffer, 5%-50% glycerol. If the delivery form is lyophilized powder, the buffer before lyophilization is Tris/PBS-based buffer, 6% Trehalose, pH 8.0.
Molecular Mass	34.6 kDa
AA Sequence	MTTPRNSMSGTLPVDPMKSPTAMYPVQKIIPKRMPSVVGPTQNFFMRESKTLGAVQ IMNGLFHIALGSLMIHTDVCAPICITMWYPLWGGIMFIISGSLAAADKNPRKSLVKG KMIMNSLSLFAAISGIIFLIMDIFNITISHFFKMENLNLIKAPMPYVDIHNCDPANPSEKN SLSIQYCGSIRSIVFLGVFAVMLIFAFFQKLVTAGIVENEWKKLCSKPKSDVVLLAAEE KKEQPIETTEEMVELTEIASQPKKEEDIEIIPVQEEEGELEINFAEPPQEQUESSPIENDS IP
Purity	Greater than 85% as determined by SDS-PAGE.

 Tel: 1-631-559-9269 1-516-512-3133

 Email: info@creative-biomart.com  Fax: 1-631-938-8127

 45-1 Ramsey Road, Shirley, NY 11967, USA

Storage Store at -20°C/-80°C upon receipt, aliquoting is necessary for multiple use. Avoid repeated freeze-thaw cycles.

Reconstitution Please reconstitute protein in deionized sterile water to a concentration of 0.1-1.0 mg/mL. We recommend to add 5-50% of glycerol (final concentration) and aliquot for long-term storage at -20°C/-80°C.

GENE INFORMATION

Gene Name MS4A1 membrane-spanning 4-domains, subfamily A, member 1 [*Canis lupus familiaris*]

Official Symbol MS4A1

Synonyms MS4A1; membrane-spanning 4-domains, subfamily A, member 1; B-lymphocyte antigen CD20; membrane-spanning 4-domains subfamily A member 1; CD20;

Gene ID 485430

mRNA Refseq NM_001048028

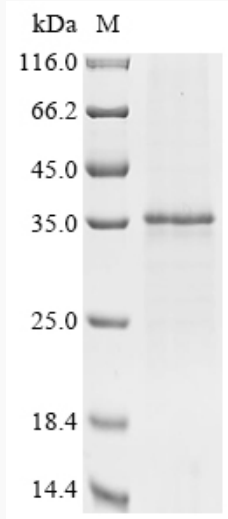
Protein Refseq NP_001041493

 Tel: 1-631-559-9269 1-516-512-3133

 Email: info@creative-biomart.com  Fax: 1-631-938-8127

 45-1 Ramsey Road, Shirley, NY 11967, USA

SDS-PAGE



 Tel: 1-631-559-9269 1-516-512-3133

 Email: info@creative-biomart.com  Fax: 1-631-938-8127

 45-1 Ramsey Road, Shirley, NY 11967, USA