

Active Recombinant Human MS4A1 protein, His-Flag-tagged

Cat. No. MS4A1-2359H Lot. No. (See product label)

SPECIFICATION

Product Overview	Recombinant Human MS4A1 protein is produced by our Mammalian expression system and the target gene encoding Met1-Pro297 is expressed with a 6His, Flag tag at the C-terminus.
Species	Human
Source	HEK293
ProteinLength	1-297 a.a.
Form	Supplied as a 0.2 µm filtered solution of 50mM HEPES-Na, 150mM NaCl, 0.02%DDM, 0.004%CHS, 5%Glycerol, pH7.5.
Bio-activity	Loaded Anti-Human CD20 mAb-Fc on AHC Biosensor, can bind Human CD20-His-Flag with an affinity constant of 1.3 pM as determined in BLI assay.
Molecular Mass	35.1 kDa
Proteinlength	Met1-Pro297
Endotoxin	Less than 0.1 ng/ug (1 EU/ug) as determined by LAL test.
Purity	Greater than 80% as determined by reducing SDS-PAGE.
Storage	Store at ≤-70°C, stable for 6 months after receipt.

 Tel: 1-631-559-9269 1-516-512-3133

 Email: info@creative-biomart.com  Fax: 1-631-938-8127

 45-1 Ramsey Road, Shirley, NY 11967, USA

Store at $\leq -70^{\circ}\text{C}$, stable for 3 months under sterile conditions after opening.
Please minimize freeze-thaw cycles.

Reconstitution

It is recommended that sterile water be added to the vial to prepare a stock solution of 0.2 ug/ul. Centrifuge the vial at 4°C before opening to recover the entire contents.

GENE INFORMATION

Gene Name [MS4A1 membrane-spanning 4-domains, subfamily A, member 1 \[Homo sapiens \]](#)

Official Symbol [MS4A1](#)

Synonyms

MS4A1; membrane-spanning 4-domains, subfamily A, member 1; CD20; B-lymphocyte antigen CD20; B1; Bp35; MS4A2; CD20 antigen; CD20 receptor; leukocyte surface antigen Leu-16; B-lymphocyte cell-surface antigen B1; S7; CVID5; LEU-16; MGC3969;

Gene ID [931](#)

mRNA Refseq [NM_021950](#)

Protein Refseq [NP_068769](#)

MIM [112210](#)

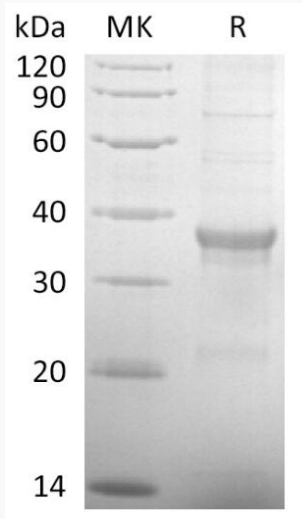
UniProt ID [P11836](#)

 Tel: 1-631-559-9269 1-516-512-3133

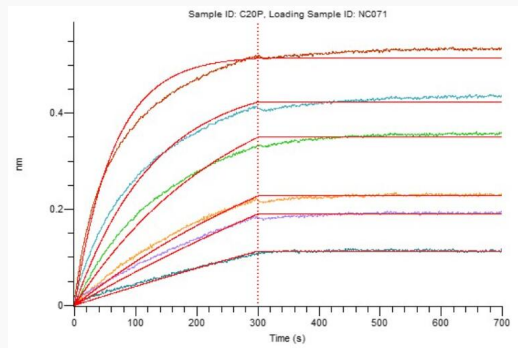
 Email: info@creative-biomart.com  Fax: 1-631-938-8127

 45-1 Ramsey Road, Shirley, NY 11967, USA

SDS-PAGE



BLI



 Tel: 1-631-559-9269 1-516-512-3133

 Email: info@creative-biomart.com  Fax: 1-631-938-8127

 45-1 Ramsey Road, Shirley, NY 11967, USA