

Recombinant Human MS4A1 Protein, Full Length

Cat. No. MS4A1-23HFL Lot. No. (See product label)

SPECIFICATION

Product Overview Human MS4A1 (P11836-1, Met1-Pro297) partial recombinant protein without tag was expressed in HEK293 cells.

Species Human

Source HEK293

ProteinLength Full length

Description

This gene encodes a member of the membrane-spanning 4A gene family. Members of this nascent protein family are characterized by common structural features and similar intron/exon splice boundaries and display unique expression patterns among hematopoietic cells and nonlymphoid tissues. This gene encodes a B-lymphocyte surface molecule which plays a role in the development and differentiation of B-cells into plasma cells. This family member is localized to 11q12, among a cluster of family members. Alternative splicing of this gene results in two transcript variants which encode the same protein.

Form Lyophilized

Bio-activity The EC50 was 8.7 ng/mL, measured by ELISA at 5 µg/mL.

Molecular Mass 34.3 kDa

Endotoxin < 1.0 EU/µg of the protein by the LAL method.

 Tel: 1-631-559-9269 1-516-512-3133

 Email: info@creative-biomart.com  Fax: 1-631-938-8127

 45-1 Ramsey Road, Shirley, NY 11967, USA

Purity	> 95% as determined by HPLC
Applications	<ol style="list-style-type: none"> 1. Enzyme-linked Immunoabsorbent Assay: Immobilized Human CD20 VLP at 5 µg/mL (100 µL/Well) on plate on the plate. Dose response curve for Rituximab, hFc Tag with the EC50 of 8.7 ng/mL determined by ELISA (QC Test). 2. Functional Study 3. SDS-PAGE
Notes	Result of bioactivity analysis
Usage	<p>Biological Activity</p> <p>ELISA</p> <p>The optimal working dilution should be determined by the end user.</p>
Storage	<p>Store at 2 centigrade to 8 centigrade for 1 week. For long term storage, aliquot and store at -20 centigrade to -80 centigrade.</p> <p>Aliquot to avoid repeated freezing and thawing.</p>
Storage Buffer	Lyophilized from sterile distilled Water is > 100 µg/mL

GENE INFORMATION

Gene Name	MS4A1 membrane spanning 4-domains A1 [Homo sapiens (human)]
Official Symbol	MS4A1
Synonyms	MS4A1; membrane spanning 4-domains A1; B1; S7; Bp35; CD20; FMC7; CVID5; LEU-16; B-lymphocyte antigen CD20; B-lymphocyte cell-surface antigen B1; CD20 antigen; CD20 receptor; leukocyte surface antigen Leu-16; membrane-spanning 4-domains, subfamily A, member 1

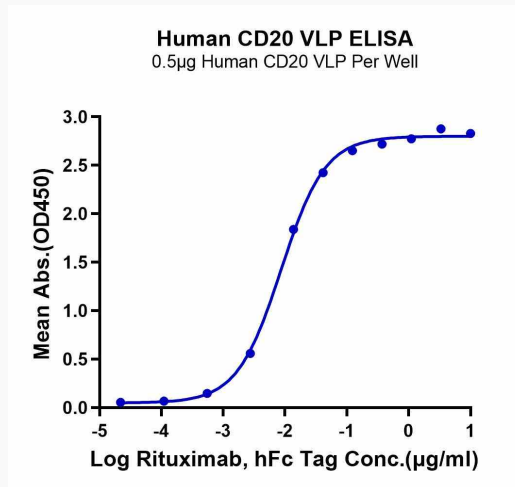
 Tel: 1-631-559-9269 1-516-512-3133

 Email: info@creative-biomart.com  Fax: 1-631-938-8127

 45-1 Ramsey Road, Shirley, NY 11967, USA

Gene ID	931
mRNA Refseq	NM_021950
Protein Refseq	NP_068769
MIM	112210
UniProt ID	P11836

**Enzyme-linked
Immunoabsorbent
Assay**



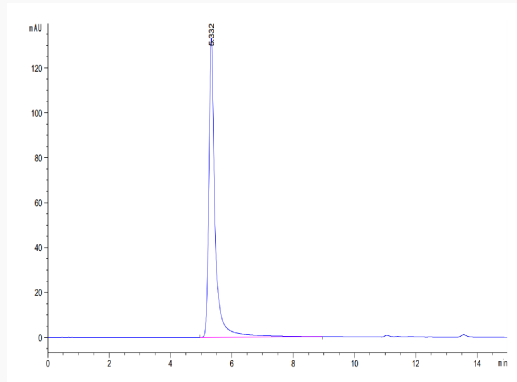
Immobilized Human CD20 VLP at 5 µg/mL (100 µL/Well) on plate on the plate.
Dose response curve for Rituximab, hFc Tag with the EC50 of 8.7 ng/mL
determined by ELISA (QC Test).

 Tel: 1-631-559-9269 1-516-512-3133

 Email: info@creative-biomart.com  Fax: 1-631-938-8127

 45-1 Ramsey Road, Shirley, NY 11967, USA

SEC-HPLC



The purity of Human CD20 VLP is greater than 95% as determined by SEC-HPLC.

**Electron microscopy
analysis of purified
hemocyanin.**

From the data, most of hemocyanin is present as a tetramer in physical environment

**Shrimp hemocyanin
owns the
comparable
immunogenicity to
KLH.**

In each group, 3 female mice were used for immunization at the induced time in figure. Elisa was used to detect the level of anti-SHC or anti-KLH antibodies.

 Tel: 1-631-559-9269 1-516-512-3133

 Email: info@creative-biomart.com  Fax: 1-631-938-8127

 45-1 Ramsey Road, Shirley, NY 11967, USA