

Active Recombinant Human MS4A1 Full Length Transmembrane protein, His-tagged(VLPs)

Cat. No. MS4A1-3928H Lot. No. (See product label)

SPECIFICATION

Product Overview	Recombinant Human MS4A1 Protein (Met1-Pro297) is produced by HEK293 expression system. This protein carries a polyhistidine tag at the C-terminus.
Species	Human
Source	HEK293
ProteinLength	1-297aa
Form	PBS, pH 7.4, 6% trehalose
Bio-activity	Measured by its binding ability in a functional ELISA. Immobilized human CD20 at 2 µg/mL can bind Anti-CD20 recombinant antibody, the EC50 is 3.243-7.085 ng/mL.
Molecular Mass	34.4 kDa
AA Sequence	<p>MTTPRNSVNGTFFPAEPMKGPIAMQSGPKPLFRRMSSLVGPTQSFFMRESKTLGAV QIMNGLFHIALGGLLMIPAGIYAPICVTWYPLWGGIMYIISGSLAATEKNSRKCLVK GKMIMNSLSLFAAISGMILSIMDILNIKISHFLKMESLNFIRAHTPYINIYNCEPANPSEK NSPSTQYCYISQSLFLGILSVMLIFAFFQELVIAGIVENEWKRTCSRPKSNIVLLSAEEK KEQTIEIKEEVVGLTETSSQPKNEEDIEIPIQEEEEEEETETNFPEPPQDQESSPIENDS SP</p>
Endotoxin	Less than 1.0 EU/ug as determined by LAL method.

 Tel: 1-631-559-9269 1-516-512-3133

 Email: info@creative-biomart.com  Fax: 1-631-938-8127

 45-1 Ramsey Road, Shirley, NY 11967, USA

Storage	Store at -20°C/-80°C upon receipt, aliquoting is necessary for mutiple use. Avoid repeated freeze-thaw cycles.
Reconstitution	Please reconstitute protein in deionized sterile water to a concentration of 0.1-1.0 mg/mL. We recommend to add 5-50% of glycerol (final concentration) and aliquot for long-term storage at -20°C/-80°C. Our default final concentration of glycerol is 50%.

GENE INFORMATION

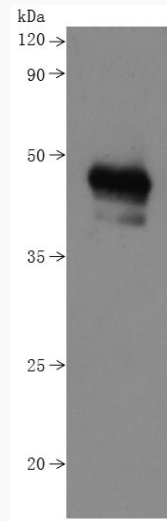
Gene Name	MS4A1 membrane-spanning 4-domains, subfamily A, member 1 [Homo sapiens]
Official Symbol	MS4A1
Synonyms	MS4A1; membrane-spanning 4-domains, subfamily A, member 1; CD20; B-lymphocyte antigen CD20; B1; Bp35; MS4A2; CD20 antigen; CD20 receptor; leukocyte surface antigen Leu-16; B-lymphocyte cell-surface antigen B1; S7; CVID5; LEU-16; MGC3969;
Gene ID	931
mRNA Refseq	NM_021950
Protein Refseq	NP_068769
MIM	112210
UniProt ID	P11836

 Tel: 1-631-559-9269 1-516-512-3133

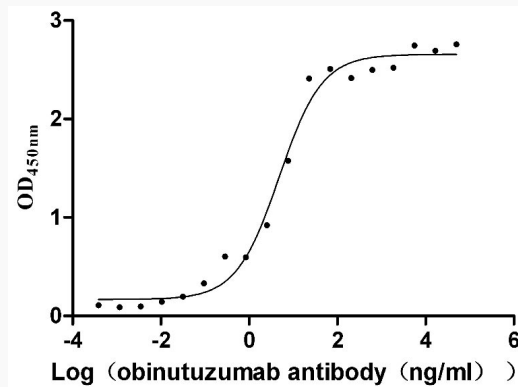
 Email: info@creative-biomart.com  Fax: 1-631-938-8127

 45-1 Ramsey Road, Shirley, NY 11967, USA

SDS-PAGE



Activity



 Tel: 1-631-559-9269 1-516-512-3133

 Email: info@creative-biomart.com  Fax: 1-631-938-8127

 45-1 Ramsey Road, Shirley, NY 11967, USA