

## Recombinant Human MS4A1 protein

Cat. No. MS4A1-3930H Lot. No. (See product label)

### SPECIFICATION

<b>Product Overview</b>	Recombinant Human MS4A1 protein(P11836-1)(Met1-Pro297) was expressed in HEK293.
<b>Species</b>	Human
<b>Source</b>	HEK293
<b>ProteinLength</b>	Met1-Pro297
<b>Tag</b>	Non
<b>Form</b>	Lyophilized from 0.22µm filtered solution in PBS (pH 7.4). Normally 8% trehalose is added as protectant before lyophilization. Notice: If you need it for immunization, Do Not use any adjuvant.
<b>Bio-activity</b>	Immobilized Human CD20 VLP at 5ug/ml (100ul/Well) on plate on the plate. Dose response curve for Rituximab, hFc Tag with the EC50 of 11.4ng/ml determined by ELISA (QC Test).
<b>Molecular Mass</b>	Human CD20 Protein has a predicted MW of 34.3 kDa.
<b>Endotoxin</b>	Less than 1EU per µg by the LAL method.
<b>Purity</b>	> 95% as determined by HPLC

 Tel: 1-631-559-9269 1-516-512-3133

 Email: [info@creative-biomart.com](mailto:info@creative-biomart.com)  Fax: 1-631-938-8127

 45-1 Ramsey Road, Shirley, NY 11967, USA

**Storage** Reconstituted protein stable at -80°C for 12 months, 4°C for 1 week. Use a manual defrost freezer and avoid repeated freeze-thaw cycles.

**Reconstitution** Centrifuge tubes before opening. Reconstituting to a concentration more than 100 µg/ml is recommended. Dissolve the lyophilized protein in distilled water.

## GENE INFORMATION

**Gene Name** [MS4A1 membrane-spanning 4-domains, subfamily A, member 1 \[ Homo sapiens \]](#)

**Official Symbol** [MS4A1](#)

**Synonyms** MS4A1; membrane-spanning 4-domains, subfamily A, member 1; CD20; B-lymphocyte antigen CD20; B1; Bp35; MS4A2; CD20 antigen; CD20 receptor; leukocyte surface antigen Leu-16; B-lymphocyte cell-surface antigen B1; S7; CVID5; LEU-16; MGC3969;

**Gene ID** [931](#)

**mRNA Refseq** [NM\\_021950](#)

**Protein Refseq** [NP\\_068769](#)

**MIM** [112210](#)

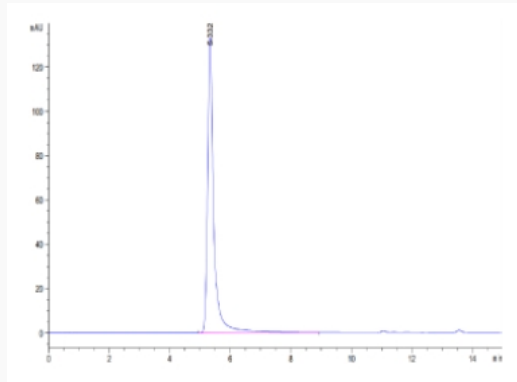
**UniProt ID** [P11836](#)

 Tel: 1-631-559-9269 1-516-512-3133

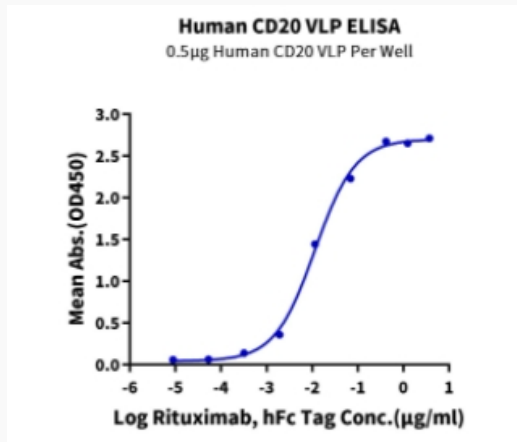
 Email: [info@creative-biomart.com](mailto:info@creative-biomart.com)  Fax: 1-631-938-8127

 45-1 Ramsey Road, Shirley, NY 11967, USA

**Tris-Bis PAGE**



**ELISA Data**



 Tel: 1-631-559-9269 1-516-512-3133

 Email: [info@creative-biomart.com](mailto:info@creative-biomart.com)  Fax: 1-631-938-8127

 45-1 Ramsey Road, Shirley, NY 11967, USA