

## Recombinant Dog MS4A1 protein, His&Myc-tagged

Cat. No. MS4A1-432D Lot. No. (See product label)

### SPECIFICATION

<b>Product Overview</b>	Recombinant Dog MS4A1 protein(Q3C2E2)(210-297aa), fused with N-terminal His tag and C-terminal Myc tag, was expressed in E.coli.
<b>Species</b>	Dog
<b>Source</b>	E.coli
<b>ProteinLength</b>	210-297aa
<b>Form</b>	If the delivery form is liquid, the default storage buffer is Tris/PBS-based buffer, 5%-50% glycerol. If the delivery form is lyophilized powder, the buffer before lyophilization is Tris/PBS-based buffer, 6% Trehalose, pH 8.0.
<b>Molecular Mass</b>	17.4 kDa
<b>Purity</b>	Greater than 90% as determined by SDS-PAGE.
<b>Storage</b>	Store at -20°C/-80°C upon receipt, aliquoting is necessary for mutiple use. Avoid repeated freeze-thaw cycles.
<b>Reconstitution</b>	We recommend that this vial be briefly centrifuged prior to opening to bring the contents to the bottom. Please reconstitute protein in deionized sterile water to a concentration of 0.1-1.0 mg/mL. We recommend to add 5-50% of glycerol (final concentration) and aliquot for long-term storage at -20°C/-80°C.

 Tel: 1-631-559-9269 1-516-512-3133

 Email: [info@creative-biomart.com](mailto:info@creative-biomart.com)  Fax: 1-631-938-8127

 45-1 Ramsey Road, Shirley, NY 11967, USA

**AA Sequence** GIVENEWKKLCSKPKSDVVVLLAAEEKKEQPIETTEEMVELTEIASQPKKEEDIEIIPV  
QEEEGELEINFAEPPQEQESSPIENDSIP

## GENE INFORMATION

**Gene Name** MS4A1 membrane-spanning 4-domains, subfamily A, member 1 [ *Canis lupus familiaris* ]

**Official Symbol** MS4A1

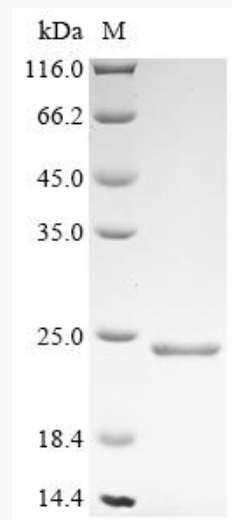
**Synonyms** MS4A1; membrane-spanning 4-domains, subfamily A, member 1; B-lymphocyte antigen CD20; membrane-spanning 4-domains subfamily A member 1; CD20;

**Gene ID** 485430

**mRNA Refseq** NM\_001048028

**Protein Refseq** NP\_001041493

## SDS-PAGE



 Tel: 1-631-559-9269 1-516-512-3133

 Email: [info@creative-biomart.com](mailto:info@creative-biomart.com)  Fax: 1-631-938-8127

 45-1 Ramsey Road, Shirley, NY 11967, USA