

Recombinant Human MS4A1 protein, His-tagged

Cat. No. MS4A1-5318H Lot. No. (See product label)

SPECIFICATION

Product Overview	Recombinant Human MS4A1 protein(NP_068769.2) (Glu213-297) was expressed in HEK293, with an N-terminal polyhistidine tag.
Species	Human
Source	HEK293
ProteinLength	213-297 aa
Form	Lyophilized from sterile PBS, pH 7.4.
Molecular Mass	The recombinant human CD20 comprises 105 amino acids and has a predicted molecular mass of 12.1 kDa. The apparent molecular mass of the protein is approximately 23 kDa in SDS-PAGE under reducing conditions due to glycosylation.
Endotoxin	< 1.0 EU per µg of the protein as determined by the LAL method.
Purity	> 83 % as determined by SDS-PAGE
Storage	Store it under sterile conditions at -20°C to -80°C upon receiving. Recommend to aliquot the protein into smaller quantities for optimal storage. Avoid repeated freeze-thaw cycles.
Reconstitution	It is recommended that sterile water be added to the vial to prepare a stock solution of 0.2 ug/ul. Centrifuge the vial at 4°C before opening to recover the entire contents.

 Tel: 1-631-559-9269 1-516-512-3133

 Email: info@creative-biomart.com  Fax: 1-631-938-8127

 45-1 Ramsey Road, Shirley, NY 11967, USA

protein Refseq-Weblink http://www.ncbi.nlm.nih.gov/protein/NP_068769.2

Unit ID P11836

Unit ID-Weblink <http://www.uniprot.org/uniprot/P11836>

GENE INFORMATION

Gene Name [MS4A1 membrane-spanning 4-domains, subfamily A, member 1 \[Homo sapiens \]](#)

Official Symbol [MS4A1](#)

Synonyms MS4A1; membrane-spanning 4-domains, subfamily A, member 1; CD20; B-lymphocyte antigen CD20; B1; Bp35; MS4A2; CD20 antigen; CD20 receptor; leukocyte surface antigen Leu-16; B-lymphocyte cell-surface antigen B1; S7; CVID5; LEU-16; MGC3969;

Gene ID [931](#)

mRNA Refseq [NM_021950](#)

protein Refseq NP_068769

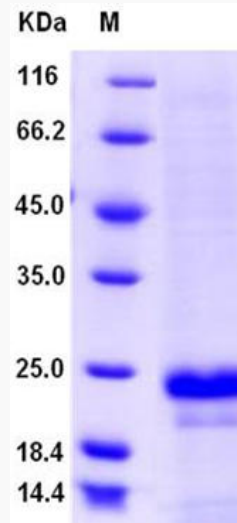
MIM [112210](#)

 Tel: 1-631-559-9269 1-516-512-3133

 Email: info@creative-biomart.com  Fax: 1-631-938-8127

 45-1 Ramsey Road, Shirley, NY 11967, USA

SDS-PAGE



 Tel: 1-631-559-9269 1-516-512-3133

 Email: info@creative-biomart.com  Fax: 1-631-938-8127

 45-1 Ramsey Road, Shirley, NY 11967, USA