

Active Recombinant Dog MS4A1 Full Length Transmembrane protein, His-tagged(VLPs)

Cat. No. MS4A1-6578D Lot. No. (See product label)

SPECIFICATION

Product Overview	Recombinant Dog MS4A1 protein(Q3C2E2-1)(Met 1 - Pro 297) is expressed from HEK293 with His tag.
Species	Dog
Source	HEK293
ProteinLength	1-297aa
Form	Lyophilized from a 0.2 µm filtered PBS, 6% Trehalose, pH 7.4
Bio-activity	Measured by its binding ability in a functional ELISA. Immobilized Dog CD20 at 10 µg/mL can bind Anti-CD20 recombinant antibody, the EC50 is 147.3-199.0 ng/mL.
Molecular Mass	34.4 kDa
AA Sequence	<p>MTTPRNSMSGTLPVDPMKSPTAMYVPVQKIIPKRMPSVVGPTQNFFMRESKTLGAVQ IMNGLFHIALGSLMIHTDVCAPICITMWYPLWGGIMFIISGSLAAADKNPRKSLVKG KMIMNSLSLFAAISGIIFLIMDIFNITISHFFKMENLNLIKAPMPYVDIHNCDPANPSEKN SLSIQYCGSIRSIVFLGVFAVMLIFAFFQKLVTAGIVENEWKKLCSKPKSDVVLLAAEE KKEQPIETTEEMVELTEIASQPKKEEDIEIIPVQEEEGELEINFAEPPQEQESSPIENDS IP</p>
Endotoxin	Less than 1.0 EU/ug as determined by LAL method.

 Tel: 1-631-559-9269 1-516-512-3133

 Email: info@creative-biomart.com  Fax: 1-631-938-8127

 45-1 Ramsey Road, Shirley, NY 11967, USA

Storage Store at -20°C/-80°C upon receipt, aliquoting is necessary for multiple use. Avoid repeated freeze-thaw cycles.

Reconstitution Please reconstitute protein in deionized sterile water to a concentration of 0.1-1.0 mg/mL. We recommend to add 5-50% of glycerol (final concentration) and aliquot for long-term storage at -20°C/-80°C. Our default final concentration of glycerol is 50%.

GENE INFORMATION

Gene Name MS4A1 membrane-spanning 4-domains, subfamily A, member 1 [*Canis lupus familiaris*]

Official Symbol MS4A1

Synonyms MS4A1; membrane-spanning 4-domains, subfamily A, member 1; B-lymphocyte antigen CD20; membrane-spanning 4-domains subfamily A member 1; CD20;

Gene ID 485430

mRNA Refseq NM_001048028

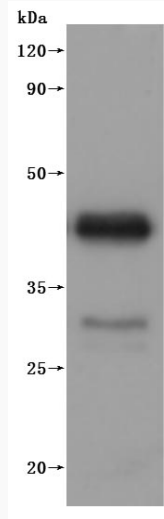
Protein Refseq NP_001041493

 Tel: 1-631-559-9269 1-516-512-3133

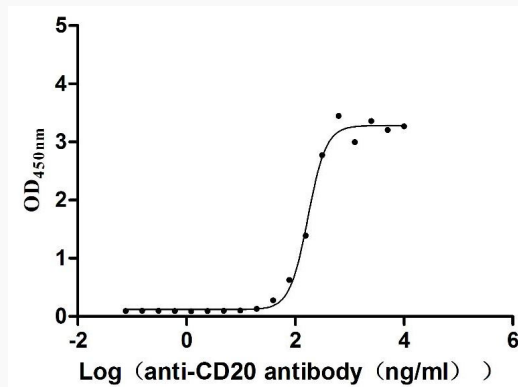
 Email: info@creative-biomart.com  Fax: 1-631-938-8127

 45-1 Ramsey Road, Shirley, NY 11967, USA

SDS-PAGE



Activity



 Tel: 1-631-559-9269 1-516-512-3133

 Email: info@creative-biomart.com  Fax: 1-631-938-8127

 45-1 Ramsey Road, Shirley, NY 11967, USA