

Recombinant Human MS4A2 Protein, GST-tagged

Cat. No. MS4A2-5634H Lot. No. (See product label)

SPECIFICATION

Product Overview	Human MS4A2 full-length ORF (NP_000130.1, 1 a.a. - 244 a.a.) recombinant protein with GST-tag at N-terminal.
Species	Human
Source	Wheat Germ
Description	<p>The allergic response involves the binding of allergen to receptor-bound IgE followed by cell activation and the release of mediators responsible for the manifestations of allergy. The IgE-receptor, a tetramer composed of an alpha, beta, and 2 disulfide-linked gamma chains, is found on the surface of mast cells and basophils. This gene encodes the beta subunit of the high affinity IgE receptor which is a member of the membrane-spanning 4A gene family. Members of this nascent protein family are characterized by common structural features and similar intron/exon splice boundaries and display unique expression patterns among hematopoietic cells and nonlymphoid tissues. This family member is localized to 11q12, among a cluster of family members. Alternative splicing results in multiple transcript variants encoding different isoforms</p>
Molecular Mass	52.9 kDa
AA Sequence	<p>MDTESNRRANLALPQEPSSVPAFEVLEISPQEVSSGRLLKSASSPPLHTWLTVLKKE QEFLGVTQILTAMICLCFGTVVCSVLDISHIEGDIFSSFKAGYFPWGAIFFSISGMLSIIIS ERRNATYLVRGSLGANTASSIAGGTGITILIINLKKSLAYIHIHSCQKFFETKCFMASFS</p>

 Tel: 1-631-559-9269 1-516-512-3133

 Email: info@creative-biomart.com  Fax: 1-631-938-8127

 45-1 Ramsey Road, Shirley, NY 11967, USA

TEIVVMMLFLTILGLGSAVSLTICGAGEELKGNKVPEDRVYEELNIYSATYSELEDPGEMSPPIDL

Applications	<p>Enzyme-linked Immunoabsorbent Assay</p> <p>Western Blot (Recombinant protein)</p> <p>Antibody Production</p> <p>Protein Array</p>
Notes	Best use within three months from the date of receipt of this protein.
Storage	Store at -80 centigrade. Aliquot to avoid repeated freezing and thawing.
Storage Buffer	50 mM Tris-HCl, 10 mM reduced Glutathione, pH=8.0 in the elution buffer.

GENE INFORMATION

Gene Name	MS4A2 membrane-spanning 4-domains, subfamily A, member 2 [Homo sapiens]
Official Symbol	MS4A2
Synonyms	<p>MS4A2; membrane-spanning 4-domains, subfamily A, member 2; APY, FCER1B, IgE responsiveness (atopic) , IGER, membrane spanning 4 domains, subfamily A, member 2 (Fc fragment of IgE, high affinity I, receptor for; beta polypeptide); high affinity immunoglobulin epsilon receptor subunit beta; Fc fragment of IgE; high affinity I; receptor for; beta polypeptide; MS4A1; igE Fc receptor subunit beta; high affinity IgE receptor beta subunit; immunoglobulin E receptor, high affinity, beta polypeptide; Fc fragment of IgE, high affinity I, receptor for; beta polypeptide; High affinity immunoglobulin epsilon receptor beta-subunit (FcERI) (IgE Fc receptor, beta-subunit) (Fc epsilon receptor I beta-chain); APY; IGEL; IGER; ATOPY; FCERI; IGHHER; FCER1B;</p>

Gene ID 2206

mRNA Refseq NM_000139

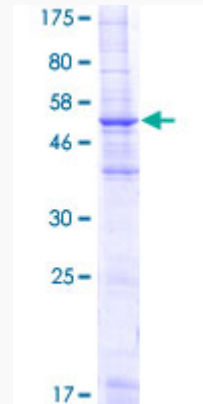
Protein Refseq NP_000130

MIM 147138


UniProt ID Q01362

Quality Control

Testing:



12.5% SDS-PAGE Stained with Coomassie Blue.

 Tel: 1-631-559-9269 1-516-512-3133

 Email: info@creative-biomart.com  Fax: 1-631-938-8127

 45-1 Ramsey Road, Shirley, NY 11967, USA