

Recombinant Human MSH2

Cat. No. MSH2-162H Lot. No. (See product label)

SPECIFICATION

Species	Human
Source	E.coli
ProteinLength	735-934 a.a.
ProductOverview	RecombinantHuman MSH2 protein expressed in E.coli encodes amino acids 735-934.
Description	MSH2 (MutS homologue 2) is a 100-kDaprotein involved in mismatched nucleotides during DNA replication or repairprocess. MSH2 functions as one of the four major DNA mismatch repair genesalong with MLH1, PMS2 and PMS1. Somatic mutations in the human MSH2 genecontribute to the development of sporadic colorectal carcinomas whilegermline mutations are involved in a large number of colorectal carcinoma.
Formulation	Recombinant Human MSH2 protein at 100g/mlin 50mM Tris-Acetate, pH7.5, 1mM EDTA and 20% Glycerol.
ApplicationAnd Suggested Dilutions	•ELISA •Inhibition Assays •Western Blotting
Characterization	MSH2 Antibody reactive.
Storage & Stability	Store vial at -20°C to -80°C. When stored at the recommended temperature,this

 Tel: 1-631-559-9269 1-516-512-3133

 Email: info@creative-biomart.com  Fax: 1-631-938-8127

 45-1 Ramsey Road, Shirley, NY 11967, USA

protein is stable for 12 months.

GENE INFORMATION

Gene Name	MSH2mutS homolog 2, colon cancer, nonpolyposis type 1 (E. coli) [Homo sapiens]
Synonyms	MSH2;mutS homolog 2, colon cancer, nonpolyposis type 1 (E. coli); FCC1; COCA1;HNPCC; LCFS2; HNPCC1; mutS homolog 2; mutS (E. coli) homolog 2 (colon cancer,nonpolyposis type 1); DNA mismatch repair protein Msh2; MutS protein homolog2
Gene ID	4436
mRNA Refseq	NM_000251
Protein Refseq	NP_000242
MIM	609309
UniProt ID	P43246
Chromosome Location	2p21
Pathway	Colorectal cancer; Mismatch repair; Pathways in cancer
Function	ADP binding; ATP binding; ATPase activity; MutLalpha complex binding; centromeric DNA binding; damaged DNA binding; dinucleotide repeat insertion binding; four-way junction DNA binding; guanine/thymine mispair binding; magnesium ion binding; nucleotide binding; oxidized purine DNA binding; protein C-terminus binding; protein homodimerization activity; single guanine insertion binding;

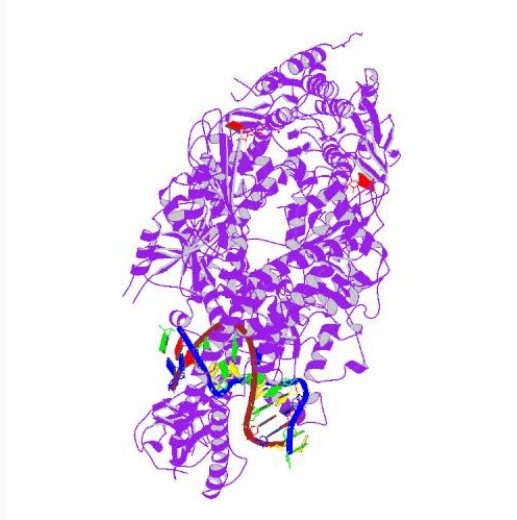
 Tel: 1-631-559-9269 1-516-512-3133

 Email: info@creative-biomart.com  Fax: 1-631-938-8127

 45-1 Ramsey Road, Shirley, NY 11967, USA

singlethymine insertion binding; single-stranded DNA binding

PDB rendering
based on 2o8b.



 Tel: 1-631-559-9269 1-516-512-3133

 Email: info@creative-biomart.com  Fax: 1-631-938-8127

 45-1 Ramsey Road, Shirley, NY 11967, USA