

Recombinant Human MSH2 Protein, His-tagged

Cat. No. MSH2-2456H Lot. No. (See product label)

SPECIFICATION

Product Overview	Recombinant Human MSH2 Protein (Asn535-Thr934) with a N-His tag was expressed in E. coli.
Species	Human
Source	E.coli
ProteinLength	Asn535-Thr934
Description	This locus is frequently mutated in hereditary nonpolyposis colon cancer (HNPCC). When cloned, it was discovered to be a human homolog of the E. coli mismatch repair gene mutS, consistent with the characteristic alterations in microsatellite sequences (RER+ phenotype) found in HNPCC. Two transcript variants encoding different isoforms have been found for this gene.
Form	Freeze-dried powder
Molecular Mass	Predicted Molecular Mass: 47.7 kDa Accurate Molecular Mass: 48/16 kDa
Endotoxin	<1.0 EU per 1g (determined by the LAL method).
Purity	> 90%
Applications	Positive Control; Immunogen; SDS-PAGE; WB.

 Tel: 1-631-559-9269 1-516-512-3133

 Email: info@creative-biomart.com  Fax: 1-631-938-8127

 45-1 Ramsey Road, Shirley, NY 11967, USA



Stability	The thermal stability is described by the loss rate. The loss rate was determined by accelerated thermal degradation test, that is, incubate the protein at 37 centigrade for 48h, and no obvious degradation and precipitation were observed. The loss rate is less than 5% within the expiration date under appropriate storage condition.
Storage	Avoid repeated freeze/thaw cycles. Store at 2-8 centigrade for one month. Aliquot and store at -80 centigrade for 12 months.
Storage Buffer	100mM NaHCO ₃ , 500mM NaCl, pH8.3, containing 1mM EDTA, 1mM DTT, 0.01% SKL, 5% Trehalose and Proclin300.
Reconstitution	Reconstitute in 100mM NaHCO ₃ , 500mM NaCl (pH8.3) to a concentration of 0.1-1.0 mg/mL. Do not vortex.

GENE INFORMATION

Gene Name	MSH2 mutS homolog 2, colon cancer, nonpolyposis type 1 (E. coli) [Homo sapiens (human)]
Official Symbol	MSH2
Synonyms	MSH2; mutS homolog 2, colon cancer, nonpolyposis type 1 (E. coli); COCA1, mutS (E. coli) homolog 2 (colon cancer, nonpolyposis type 1); DNA mismatch repair protein Msh2; HNPCC; HNPCC1; hMSH2; FCC1; COCA1; LCFS2;
Gene ID	4436
mRNA Refseq	NM_000251
Protein Refseq	NP_000242

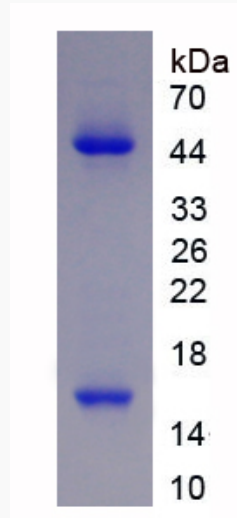
Tel: 1-631-559-9269 1-516-512-3133

Email: info@creative-biomart.com Fax: 1-631-938-8127

45-1 Ramsey Road, Shirley, NY 11967, USA

MIM 609309

UniProt ID P43246



 Tel: 1-631-559-9269 1-516-512-3133

 Email: info@creative-biomart.com  Fax: 1-631-938-8127

 45-1 Ramsey Road, Shirley, NY 11967, USA