

Recombinant Human MSH5 Protein, GST-tagged

Cat. No. MSH5-5652H Lot. No. (See product label)

SPECIFICATION

Product Overview	Human MSH5 partial ORF (AAH02498, 736 a.a. - 835 a.a.) recombinant protein with GST-tag at N-terminal.
Species	Human
Source	Wheat Germ
Description	This gene encodes a member of the mutS family of proteins that are involved in DNA mismatch repair or meiotic recombination processes. This protein is similar to a <i>Saccharomyces cerevisiae</i> protein that participates in meiotic segregation fidelity and crossing-over. This protein forms heterooligomers with another member of this family, mutS homolog 4. Alternative splicing results in four transcript variants encoding three different isoforms. [provided by RefSeq]
Molecular Mass	36.63 kDa
AA Sequence	GNDLVFFYQVCEGVAKASHASHTAAQAGLPDKLVARGKEVSDLIRSGKPIKPKDLL KKNQMENCQTLVDFKMKLDLEDPNLDLNVFMSQEVLPAAATSIL
Applications	Enzyme-linked Immunoabsorbent Assay Western Blot (Recombinant protein) Antibody Production Protein Array
Notes	Best use within three months from the date of receipt of this protein.

 Tel: 1-631-559-9269 1-516-512-3133

 Email: info@creative-biomart.com  Fax: 1-631-938-8127

 45-1 Ramsey Road, Shirley, NY 11967, USA

Storage Store at -80 centigrade. Aliquot to avoid repeated freezing and thawing.

Storage Buffer 50 mM Tris-HCl, 10 mM reduced Glutathione, pH=8.0 in the elution buffer.

GENE INFORMATION

Gene Name MSH5 mutS homolog 5 (E. coli) [Homo sapiens]

Official Symbol MSH5

Synonyms MSH5; mutS homolog 5 (E. coli); mutS (E. coli) homolog 5; mutS protein homolog 5; G7; NG23; MUTSH5; MGC2939; DKFZp434C1615;

Gene ID 4439

mRNA Refseq NM_002441

Protein Refseq NP_002432

MIM 603382

UniProt ID O43196

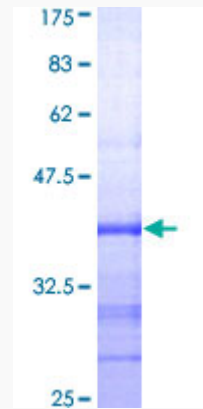
 Tel: 1-631-559-9269 1-516-512-3133

 Email: info@creative-biomart.com  Fax: 1-631-938-8127

 45-1 Ramsey Road, Shirley, NY 11967, USA

Quality Control

Testing:



12.5% SDS-PAGE Stained with Coomassie Blue.

 Tel: 1-631-559-9269 1-516-512-3133

 Email: info@creative-biomart.com  Fax: 1-631-938-8127

 45-1 Ramsey Road, Shirley, NY 11967, USA