

## Recombinant Human MSH6 Protein, N-His tagged

Cat. No. MSH6-03H Lot. No. (See product label)

### SPECIFICATION

<b>Product Overview</b>	Purified recombinant protein of Human mutS homolog 6 (E. coli) (MSH6), Met1-Ser280, with N-terminal His tag, expressed in E. coli.
<b>Species</b>	Human
<b>Source</b>	E.coli
<b>ProteinLength</b>	1-280 aa
<b>Description</b>	This gene encodes a member of the DNA mismatch repair MutS family. In E. coli, the MutS protein helps in the recognition of mismatched nucleotides prior to their repair. A highly conserved region of approximately 150 aa, called the Walker-A adenine nucleotide binding motif, exists in MutS homologs. The encoded protein heterodimerizes with MSH2 to form a mismatch recognition complex that functions as a bidirectional molecular switch that exchanges ADP and ATP as DNA mismatches are bound and dissociated. Mutations in this gene may be associated with hereditary nonpolyposis colon cancer, colorectal cancer, and endometrial cancer. Transcripts variants encoding different isoforms have been described.
<b>Molecular Mass</b>	30.7 kDa
<b>Purity</b>	> 80% as determined by SDS-PAGE and Coomassie blue staining
<b>Applications</b>	Cell culture: For culture applications, please filter before use. Note that you may experience some loss of protein during the filtration process.

 Tel: 1-631-559-9269 1-516-512-3133

 Email: [info@creative-biomart.com](mailto:info@creative-biomart.com)  Fax: 1-631-938-8127

 45-1 Ramsey Road, Shirley, NY 11967, USA

<b>Stability</b>	Stable for 12 months from the date of receipt of the product under proper storage and handling conditions. Avoid repeated freeze-thaw cycles.
<b>Storage</b>	Store at -80 centigrade.
<b>Concentration</b>	> 50 µg/mL as determined by microplate BCA method
<b>Storage Buffer</b>	50 mM Tris-HCl, pH 8.0, 8 M urea

## GENE INFORMATION

<b>Gene Name</b>	MSH6 mutS homolog 6 [ Homo sapiens (human) ]
<b>Official Symbol</b>	MSH6
<b>Synonyms</b>	MSH6; mutS homolog 6; GTBP; HSAP; p160; GTMBP; MSH-6; HNPCC5; LYNCH5; MMRCS3; DNA mismatch repair protein Msh6; G/T mismatch-binding protein; mutS protein homolog 6; mutS-alpha 160 kDa subunit; mutS-like protein 6; sperm-associated protein
<b>Gene ID</b>	2956
<b>mRNA Refseq</b>	NM_000179
<b>Protein Refseq</b>	NP_000170
<b>MIM</b>	600678
<b>UniProt ID</b>	P52701

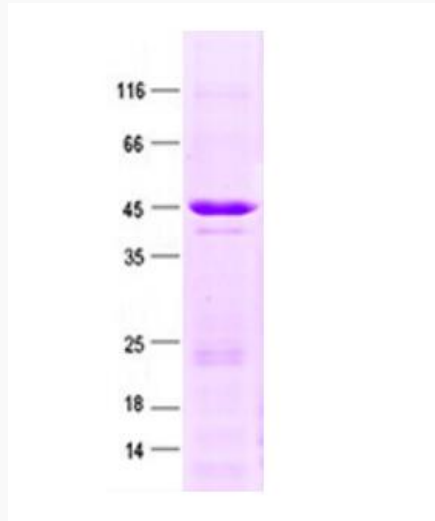
 Tel: 1-631-559-9269 1-516-512-3133

 Email: [info@creative-biomart.com](mailto:info@creative-biomart.com)  Fax: 1-631-938-8127

 45-1 Ramsey Road, Shirley, NY 11967, USA



SDS-PAGE



Tel: 1-631-559-9269 1-516-512-3133

Email: [info@creative-biomart.com](mailto:info@creative-biomart.com) Fax: 1-631-938-8127

45-1 Ramsey Road, Shirley, NY 11967, USA