

Recombinant Human MSH6 Protein (Met1-Glu400), N-His tagged

Cat. No. MSH6-4225H Lot. No. (See product label)

SPECIFICATION

Product Overview	Recombinant human MSH6 (Met1-Glu400) fused with the N-His tag was expressed in E. coli.
Species	Human
Source	E.coli
ProteinLength	Met1-Glu400
Form	Lyophilized powder/frozen liquid
Molecular Mass	46.37 kDa
Purity	>90% as determined by SDS-PAGE.
Notes	For research use only.
Storage	Use a manual defrost freezer and avoid repeated freeze thaw cycles. Store at 2 to 8 centigrade for one week. Store at -20 to -80 centigrade for twelve months from the date of receipt.
Storage Buffer	0.01M PBS, pH 7.4, 0.02% NLS
Reconstitution	Reconstitute in sterile water for a stock solution.

 Tel: 1-631-559-9269 1-516-512-3133

 Email: info@creative-biomart.com  Fax: 1-631-938-8127

 45-1 Ramsey Road, Shirley, NY 11967, USA

Shipping They are shipped out with dry ice/blue ice unless customers require otherwise.

GENE INFORMATION

Gene Name MSH6 mutS homolog 6 (E. coli) [Homo sapiens (human)]

Official Symbol MSH6

Synonyms MSH6; mutS homolog 6 (E. coli); GTBP, mutS (E. coli) homolog 6; DNA mismatch repair protein Msh6; p160; GTMBP; hMSH6; sperm-associated protein; mutS-alpha 160 kDa subunit; G/T mismatch-binding protein; GTBP; HSAP; HNPCC5;

Gene ID 2956

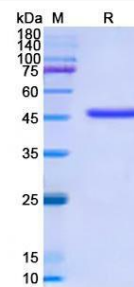
mRNA Refseq NM_000179

Protein Refseq NP_000170

MIM 600678

UniProt ID P52701

SDS-PAGE



Tel: 1-631-559-9269 1-516-512-3133

Email: info@creative-biomart.com Fax: 1-631-938-8127

45-1 Ramsey Road, Shirley, NY 11967, USA