

# Recombinant Full Length Human MSI1 Protein, C-Flag-tagged

Cat. No. MSI1-1529HFL Lot. No. (See product label)

## SPECIFICATION

**Product Overview** Recombinant Full Length Human MSI1 Protein, fused to Flag-tag at C-terminus, was expressed in Mammalian cells.

**Species** Human

**Source** Mammalian Cells

**Description** This gene encodes a protein containing two conserved tandem RNA recognition motifs. Similar proteins in other species function as RNA-binding proteins and play central roles in posttranscriptional gene regulation. Expression of this gene has been correlated with the grade of the malignancy and proliferative activity in gliomas and melanomas. A pseudogene for this gene is located on chromosome 11q13.

**Form** 25 mM Tris HCl, pH 7.3, 100 mM glycine, 10% glycerol.

**Molecular Mass** 38.9 kDa

**AA Sequence**

```

METDAPQPGLASPDSPHDPCKMFIGGLSWQTTQEGLREYFGQFGEVKECLVMRDP
LTKRSRGFGFVTFMD QAGVDKVLQSRHELDSTIDPKVAFPRRAQPKMVRTKKI
FVGGLSVNTTVEDVKQYFEQFGKVDDAML MFDKTTNRHRGFGFVTFESEDIVEKV
CEIHFHEINNKMVECKKAQPKEVMSPTGSARGRSRVMPYGMDAF MLGIGMLGYPG
FQATTYASRSYTGAPGYTYQFPEFRVERTPLPSAPVLPeltaIPLTAYGPMAAAAA
AA AVVRGTGSHPWMTAPPPGSTPSRTGGFLGTTSPGPMAELYGAANQDSGVSSYI
SAASPAPSTGFGHSLGG
PLIATAFTNGYHTRTRPLEQKLISEEDLAANDILDYKDDDDKV
    
```

 Tel: 1-631-559-9269 1-516-512-3133

 Email: [info@creative-biomart.com](mailto:info@creative-biomart.com)  Fax: 1-631-938-8127

 45-1 Ramsey Road, Shirley, NY 11967, USA

<b>Purity</b>	> 80% as determined by SDS-PAGE and Coomassie blue staining.
<b>Stability</b>	Stable for 12 months from the date of receipt of the product under proper storage and handling conditions. Avoid repeated freeze-thaw cycles.
<b>Storage</b>	Store at -80 centigrade.
<b>Concentration</b>	>50 ug/mL as determined by microplate BCA method.
<b>Preparation</b>	Recombinant protein was captured through anti-DDK affinity column followed by conventional chromatography steps.
<b>Full Length</b>	Full L.

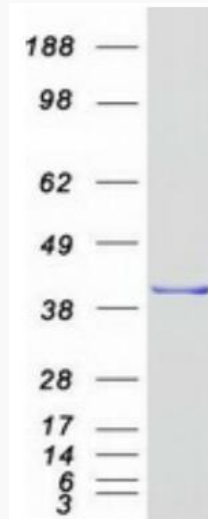
## GENE INFORMATION

<b>Gene Name</b>	MSI1 musashi RNA binding protein 1 [ Homo sapiens (human) ]
<b>Official Symbol</b>	MSI1
<b>Synonyms</b>	musashi 1; musashi homolog 1
<b>Gene ID</b>	4440
<b>mRNA Refseq</b>	NM_002442.4
<b>Protein Refseq</b>	NP_002433.1
<b>MIM</b>	603328
<b>UniProt ID</b>	O43347

 Tel: 1-631-559-9269 1-516-512-3133

 Email: [info@creative-biomart.com](mailto:info@creative-biomart.com)  Fax: 1-631-938-8127

 45-1 Ramsey Road, Shirley, NY 11967, USA



Coomassie blue staining of purified MS11 protein.

 Tel: 1-631-559-9269 1-516-512-3133

 Email: [info@creative-biomart.com](mailto:info@creative-biomart.com)  Fax: 1-631-938-8127

 45-1 Ramsey Road, Shirley, NY 11967, USA